

DPW PROJECT 19107

CSI: ENTRY ACCESS CONTROL
COLLEGE OF SOUTHERN IDAHO (CSI)
TWIN FALLS, IDAHO
Addendum #2

August 30, 2024

This Addendum applicable to work designed herein shall be understood to be and is an Addendum and as such shall be part of and included in the contract.

To all bidders for furnishing all labor and materials necessary for:

DPW PROJECT 19107

CSI: ENTRY ACCESS CONTROL
COLLEGE OF SOUTHERN IDAHO (CSI)
TWIN FALLS, IDAHO

Failure to acknowledge receipt of this Addendum on the bid proposal form may result in rejection of your bid.

GENERAL:

Bid date has been changed from Thursday September 5, 2024, at 2 P.M. to Thursday **September 19, 2024, at 2 P.M.**

Genetec system ID: GSC-201214-286672 Version 5.9

DRAWINGS:

- E2.1 – Removed keynote A.
- E2.4 – Remove references to new camera cables to clarify that these cables are existing.
- E5.1 – Changed Access control hardware from wired to wireless.
- E5.4 - Revised Door Hardware Group F2.
- E11.2 – Access control to door between Lobby and Corridor 239 in Hallway.
- E11.5 – Added Door Hardware Group H1.

SPECIFICATIONS:

282100 – Surveillance Cameras – Added acceptable manufacturers

2.1 MANUFACTURERS

- A. Acceptable Manufacturer:
 - 2. Axis Communications

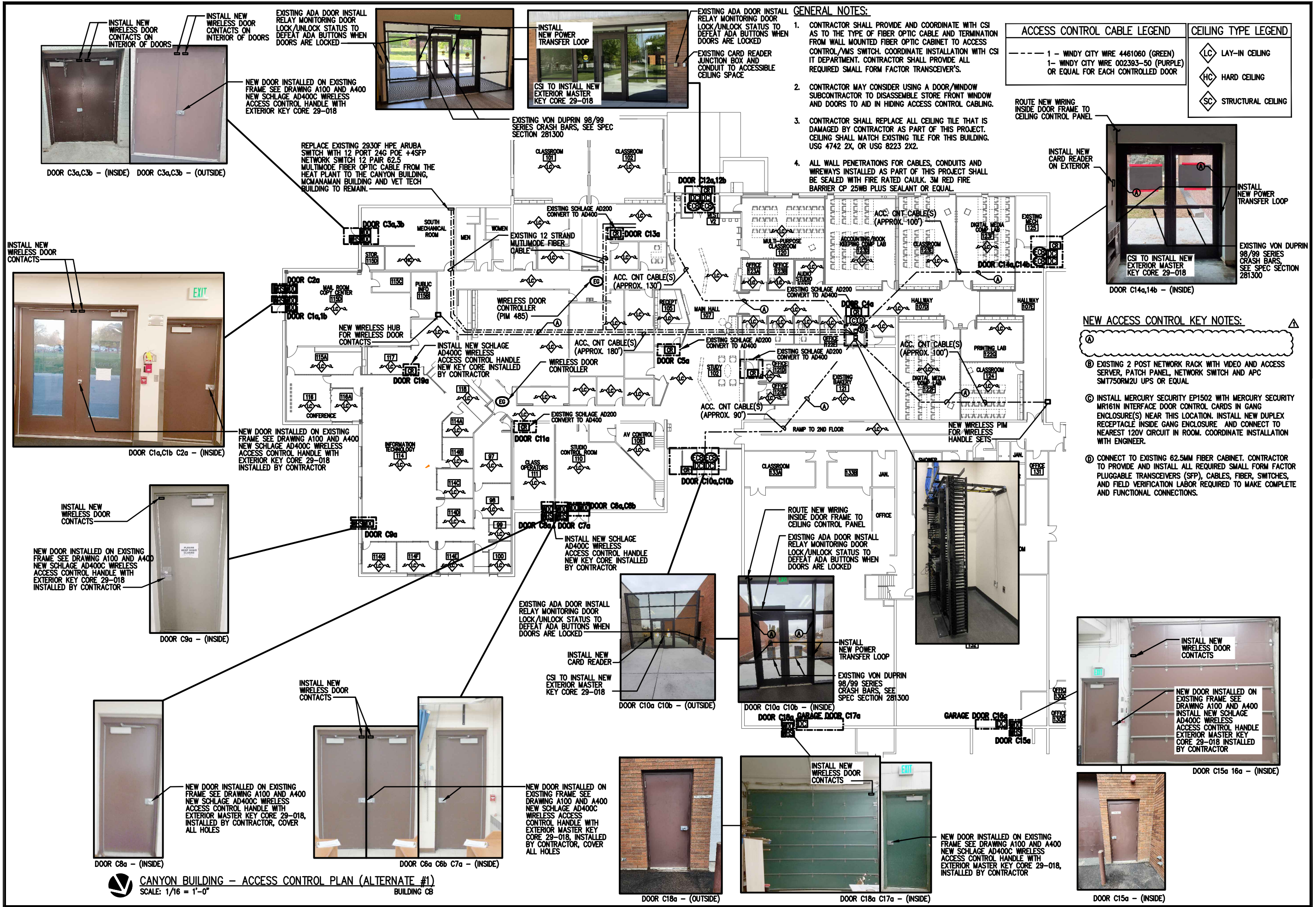
281300 – Access Control Software and Database Management – Added support clarification

1.3 PROJECT LICENSING WORKSCOPE

Genetec licensing:

1. Existing Genetec support licensing has expired. CSI requests all access control licenses, video management licenses, camera licenses to be brought current as part of this project. At the end of the project all licenses are issued such that all licenses have the same renewal date.
 - a. Within the first year - System Support requirements:
 1. Remote access availability within the same day.
 2. On-site availability within 5 days.
 3. No additional charge to agency.
 - b. After the first year - System Support requirements:
 1. Remote access availability within the same day.
 2. On-site availability within 5 days.
 3. Support services billed on an hourly basis.

END OF ADDENDUM NO. 2



GENERAL NOTES:

1. CONTRACTOR SHALL PROVIDE AND COORDINATE WITH CSI AS TO THE TYPE OF FIBER OPTIC CABLE AND TERMINATION FROM WALL MOUNTED FIBER OPTIC CABINET TO ACCESS CONTROL/WMS SWITCH. COORDINATE INSTALLATION WITH CSI IT DEPARTMENT. CONTRACTOR SHALL PROVIDE ALL REQUIRED SMALL FORM FACTOR TRANSCEIVERS.
2. CONTRACTOR MAY CONSIDER USING A DOOR/MINDOW SUBCONTRACTOR TO DISASSEMBLE STORE FRONT WINDOW AND DOORS TO AID IN HIDING ACCESS CONTROL CABLING.
3. CONTRACTOR SHALL REPLACE ALL CEILING TILE THAT IS DAMAGED BY CONTRACTOR AS PART OF THIS PROJECT. CEILING SHALL MATCH EXISTING TILE FOR THIS BUILDING. USG 4742 2X, OR USG 8223 2X2.
4. ALL WALL PENETRATIONS FOR CABLES, CONDUITS AND WIREWAYS INSTALLED AS PART OF THIS PROJECT SHALL BE SEALED WITH FIRE RATED CAULK, 3M RED FIRE BARRIER CP 25WB PLUS SEALANT OR EQUAL.

ACCESS CONTROL CABLE LEGEND

--- 1 - WINDY CITY WIRE 4461060 (GREEN)
 --- 1- WINDY CITY WIRE 002393-50 (PURPLE)
 OR EQUAL FOR EACH CONTROLLED DOOR

CEILING TYPE LEGEND

◇ LAY-IN CEILING
 ◇ HC HARD CEILING
 ◇ SC STRUCTURAL CEILING

NEW ACCESS CONTROL KEY NOTES:

Ⓐ

Ⓑ EXISTING 2 POST NETWORK RACK WITH VIDEO AND ACCESS SERVER, PATCH PANEL, NETWORK SWITCH AND APC SMT750R12U UPS OR EQUAL

Ⓒ INSTALL MERCURY SECURITY EP1502 WITH MERCURY SECURITY MR161N INTERFACE SECURITY DOOR CONTROL CARDS IN GANG ENCLOSURE(S) NEAR THIS LOCATION. INSTALL NEW DUPLEX RECEPTACLE INSIDE GANG ENCLOSURE AND CONNECT TO NEAREST 120V CIRCUIT IN ROOM. COORDINATE INSTALLATION WITH ENGINEER.

Ⓓ CONNECT TO EXISTING 62.5MM FIBER CABINET. CONTRACTOR TO PROVIDE AND INSTALL ALL REQUIRED SMALL FORM FACTOR PLUGGABLE TRANSCEIVERS (SFP), CABLES, FIBER, SWITCHES, AND FIELD VERIFICATION LABOR REQUIRED TO MAKE COMPLETE AND FUNCTIONAL CONNECTIONS.

DATE	8-30-24
REVISIONS	
NO.	1
ADDENDUM #	

MUSGROVE ENGINEERING, P.A.
 234 S. Whittemore Way
 208.584.0885
 645 West 25th Street
 Idaho Falls, ID 83402
 208.323.2882
 www.musgrove.com

OVER 40 YEARS OF EXCELLENCE

DPW PROJECT 19107
 CSI: ENTRY ACCESS CONTROLS, PHASE II
 COLLEGE OF SOUTHERN IDAHO
 TWIN FALLS, ID

PROJECT	B18-112
DRAWN	DBH
CHECKED	MNB
DATE	JULY 2024
SCALE	AS SHOWN
SHEET	

E2.1

CANYON BUILDING - ACCESS CONTROL PLAN (ALTERNATE #1)
 SCALE: 1/16" = 1'-0"

CAMERA SCHEDULE (MINIMUM SPECIFICATIONS)

SYMBOL	FORM FACTOR	FIELD OF VIEW	LENS	SHUTTER SPEED	RESOLUTION	FRAMES PER SECOND	MINIMUM ILLUMINATION	POWER INPUT	HOUSING	OPERATING TEMPERATURE
E1	EXTERIOR BULLET	H: 100-31 / V: 72-23	3.2-10.0MM, MOTORIZED VARIFOCAL	1/12,00S - 1/5S	5MP (2592X1944)	25/30	0.15 LUX @ F1.6 (COLOR)	POE	IP66	-30 C TO 55 C
I1	INTERIOR DOME	H: 100-31 / V: 72-23	3.2-10.0MM, MOTORIZED VARIFOCAL	1/12,00S - 1/5S	5MP (2592X1944)	25/30	0.15 LUX @ F1.6 (COLOR)	POE	INT	-10 C TO 55 C

GENERAL NOTES:

- ALL WALL PENETRATIONS FOR CABLES, CONDUITS AND WIREWAYS INSTALLED AS PART OF THIS PROJECT SHALL BE SEALED WITH FIRE RATED CAULK. 3M RED FIRE BARRIER CP 25WB PLUS SEALANT OR EQUAL.

NEW SECURITY KEY NOTES:

- EXISTING VIDEO CABLE INSTALLED IN DPW 19090 CANYON BUILDING REMODEL PHASE 2 PROJECT

DRAWING KEY NOTES:

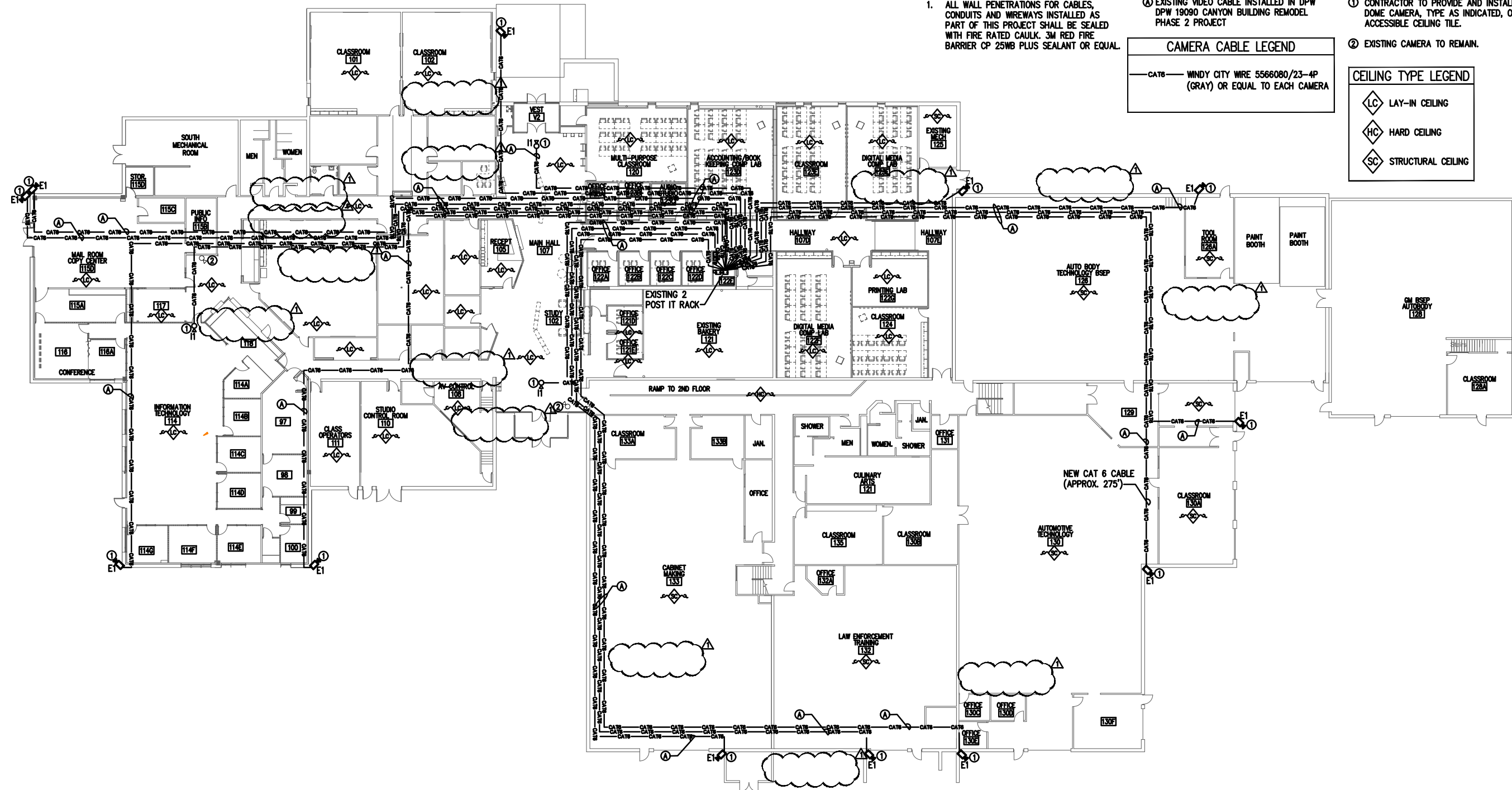
- CONTRACTOR TO PROVIDE AND INSTALL DOME CAMERA, TYPE AS INDICATED, ON ACCESSIBLE CEILING TILE.
- EXISTING CAMERA TO REMAIN.

CAMERA CABLE LEGEND

CAT6 WINDY CITY WIRE 5566080/23-4P (GRAY) OR EQUAL TO EACH CAMERA

CEILING TYPE LEGEND

- LC LAY-IN CEILING
- HC HARD CEILING
- SC STRUCTURAL CEILING



NO.	REVISIONS	DATE
1	APPENDUM #2	8-30-24

MUSGROVE ENGINEERING, P.A.
 234 S. Whippoorwill Way
 208.348.0885
 645 West 25th Street
 Idaho Falls, ID 83402
 208.323.2682
 www.musgrovepa.com

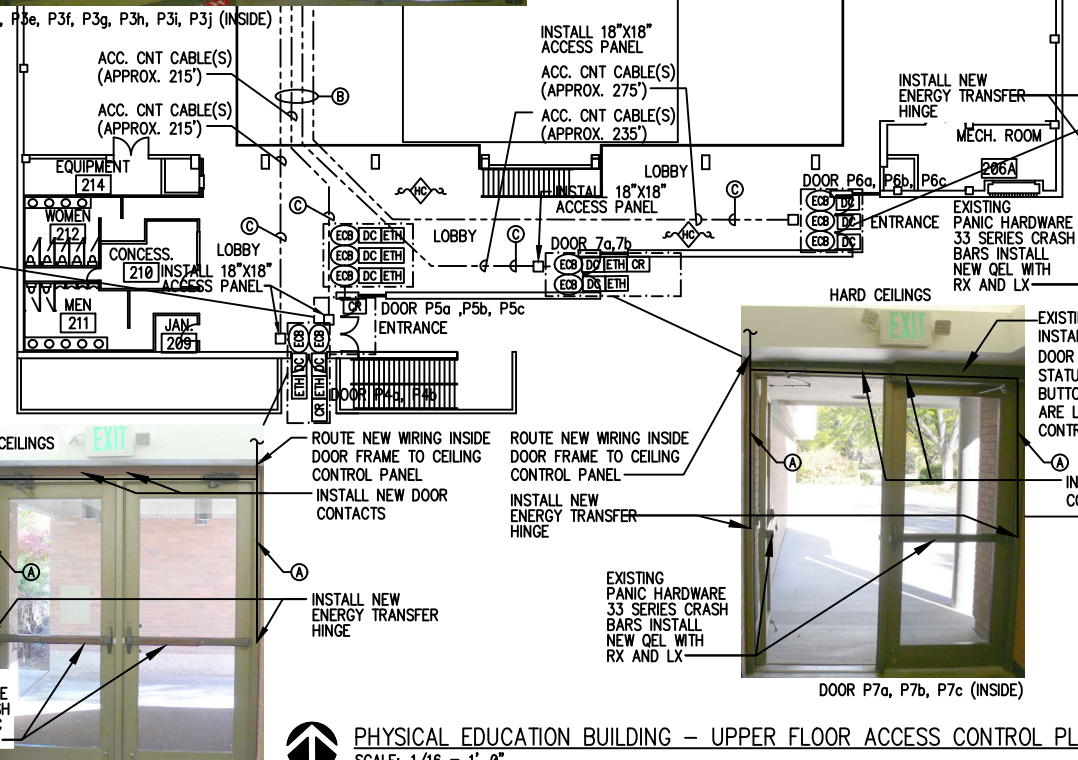
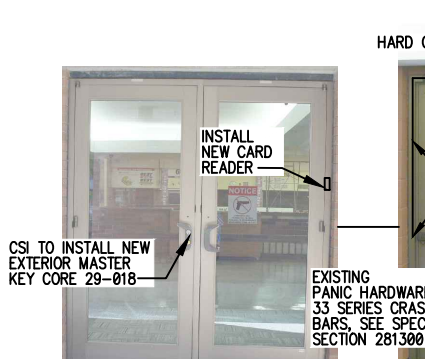
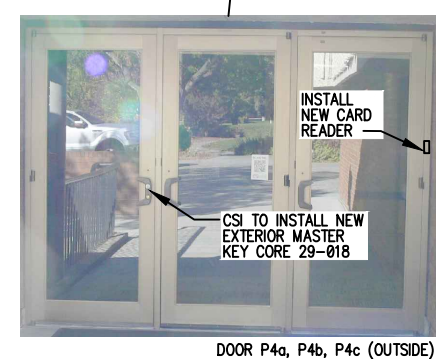
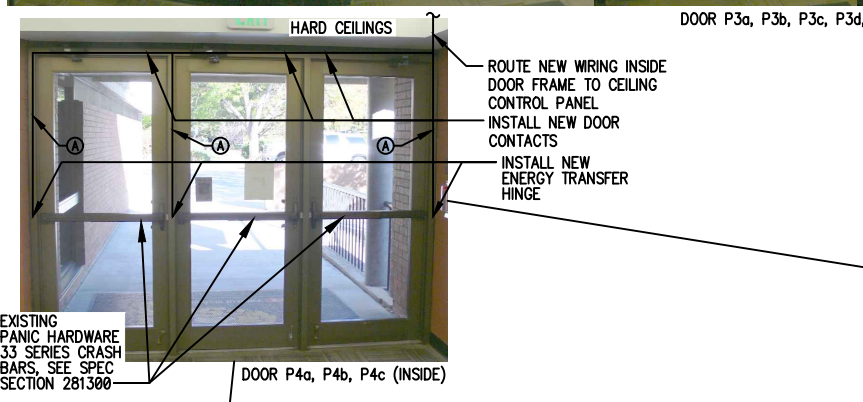
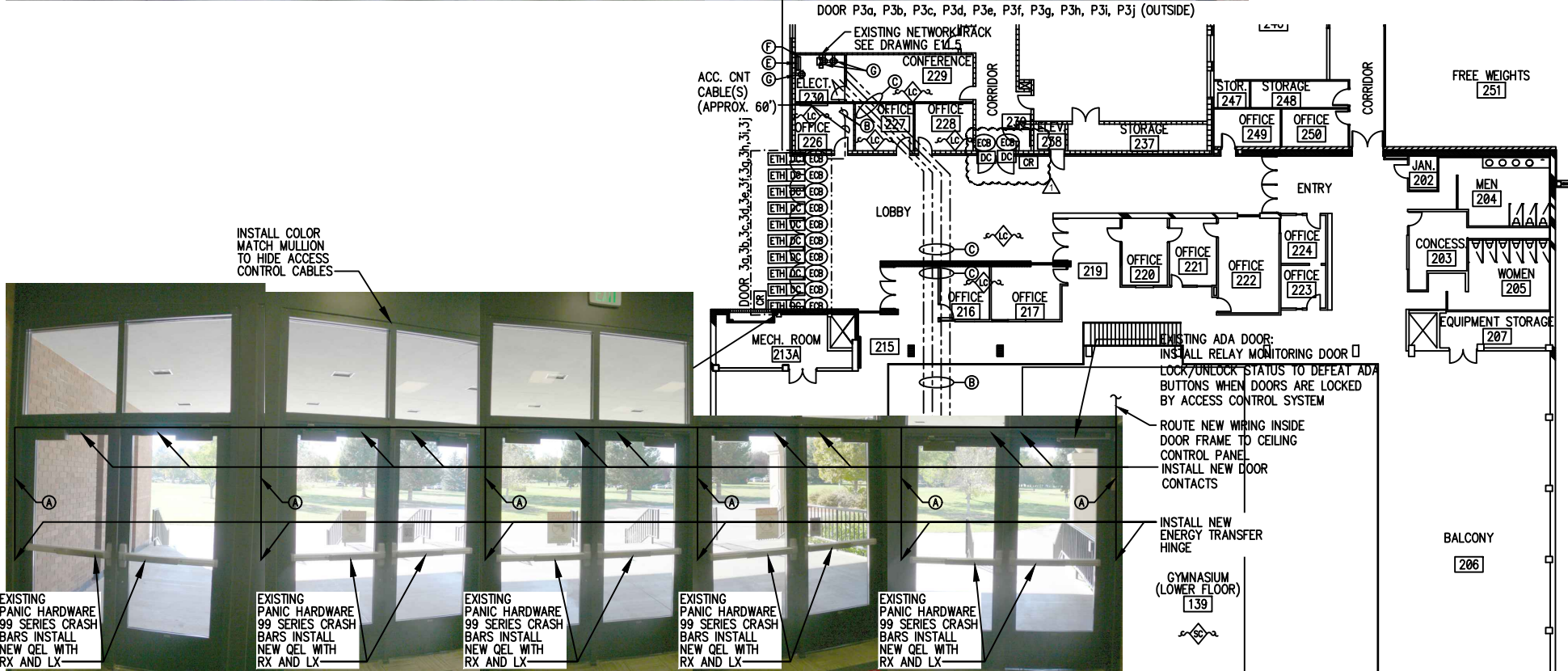
ME

OVER 40 YEARS OF EXCELLENCE

DPW PROJECT 19107
 CSI: ENTRY ACCESS CONTROLS, PHASE II
 COLLEGE OF SOUTHERN IDAHO
 TWIN FALLS, ID

PROJECT	B18-112
DRAWN	DBH
CHECKED	MNB
DATE	JULY 2024
SCALE	AS SHOWN
SHEET	

E2.4

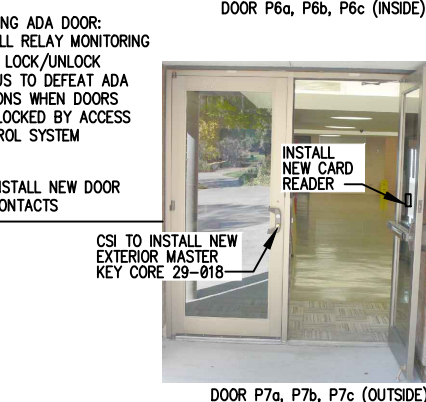
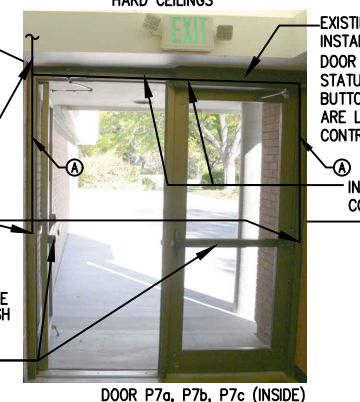
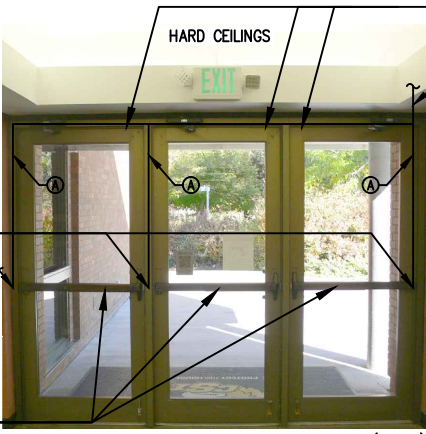
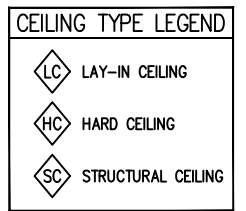
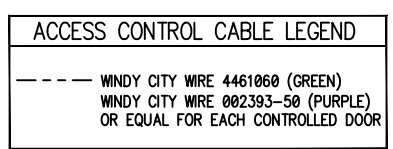


GENERAL NOTES:

- CONTRACTOR SHALL PROVIDE AND COORDINATE WITH CSI AS TO THE TYPE OF FIBER OPTIC CABLE AND TERMINATION FROM WALL MOUNTED FIBER OPTIC CABINET TO ACCESS CONTROL/VMS SWITCH. COORDINATE INSTALLATION WITH CSI IT DEPARTMENT. CONTRACTOR SHALL PROVIDE ALL REQUIRED SMALL FORM FACTOR TRANSCEIVER'S (SPF).
- CONTRACTOR MAY CONSIDER USING A DOOR/WINDOW SUBCONTRACTOR TO DISASSEMBLE STORE FRONT WINDOW AND DOORS TO AID IN HIDING ACCESS CONTROL CABLING.
- CONTRACTOR SHALL REPLACE ALL CEILING TILE THAT IS DAMAGED BY CONTRACTOR AS PART OF THIS PROJECT. CEILING SHALL MATCH EXISTING TILE FOR THIS BUILDING. USG 4742 2X, OR USG 8223 2X2.
- CONTRACTOR SHALL PROVIDE ENOUGH POWER AT DOOR POWER SUPPLIES TO ENSURE THAT ALL DOORS CAN OPEN AND CLOSE SIMULTANEOUSLY AT THE SAME TIME.
- ALL WALL PENETRATIONS FOR CABLES, CONDUITS AND WIREWAYS INSTALLED AS PART OF THIS PROJECT SHALL BE SEALED WITH FIRE RATED CAULK, 3M RED FIRE BARRIER CP 25WB PLUS SEALANT OR EQUAL.

NEW ACCESS CONTROL KEY NOTES:

- ACCESS CONTROL CABLING SHALL BE ROUTED THROUGH DOOR FRAMES AND CONCEALED USING ALL MEANS POSSIBLE, WHERE NOT POSSIBLE AS A LAST RESORT INSTALL COLOR MATCHING ALUMINUM RACEWAY. APPROVAL REQUIRED PRIOR TO INSTALLATION.
- ACCESS CONTROL CABLING TO BE ROUTED INSIDE CONDUIT SIZED CONSISTENT WITH BICSI STANDARDS. PAINT CONDUIT TO MATCH EXISTING WALLS, COORDINATE PAINT TYPE, COLOR AND SHEEN WITH CSI.
- ACCESS CONTROL CABLING ROUTED FREE AIR ABOVE ACCESSIBLE CEILING. INSTALL J-HOOKS 6 FOOT ON CENTER.
- ROUTE ACCESS CONTROL CABLING FREE AIR ABOVE GYPSUM CEILINGS. INSTALL J-HOOKS 6 FOOT ON CENTER.
- INSTALL MERCURY SECURITY EP1502 WITH MERCURY SECURITY MR161N INTERFACE DOOR CONTROL CARDS IN GANG ENCLOSURE(S) NEAR THIS LOCATION. INSTALL NEW DUPLEX RECEPTACLE INSIDE GANG ENCLOSURE AND CONNECT TO NEAREST 120V CIRCUIT IN ROOM. COORDINATE INSTALLATION WITH ENGINEER.
- INSTALL 4FTx8FT PLYWOOD PAINTED BLACK WITH 3 COATS OF FIRE RETARDANT PAINT TO MOUNT DOOR CONTROL CABINET ON.
- INSTALL NEW 120V DUPLEX OUTLETS COORDINATE FINAL LOCATION WITH CSI.



PHYSICAL EDUCATION BUILDING – UPPER FLOOR ACCESS CONTROL PLAN (ALTERNATE #3)
 SCALE: 1/16 = 1'-0"
 BUILDING PEB

DATE	24/08/20
REVISIONS	
NO	1
ADDENDUM #2	

MUSGROVE ENGINEERING P.A.
 234 S. Whisperwood Way
 208 SBL 0885
 645 West 25th Street
 Idaho Falls, ID 83402
 208.521.2862
 www.musgrovepa.com



DPW PROJECT 19107
 CSI: ENTRY ACCESS CONTROLS, PHASE II
 COLLEGE OF SOUTHERN IDAHO
 TWIN FALLS, ID

PROJECT	B18-112
DRAWN	DBH
CHECKED	MNB
DATE	JULY 2024
SCALE	AS SHOWN
SHEET	

E11.2

OVER 40 YEARS OF EXCELLENCE

HARDWARE GROUP NO. P1:

FOR USE ON DOOR #(S):

QTY	DESCRIPTION	CATALOG NUMBER	FINISH	MFR
1	EA WIRELESS DOOR CONTACT AND RECEIVER	INOVONICS EN1210W PROVIDED BY SECURITY SYSTEM INSTALLER. INOVONICS EN4204R RECEIVERS, QUANTITY AS REQUIRED FOR FUNCTIONAL SYSTEM CSI STANDARDIZED PRODUCT	WHITE	INN

HARDWARE GROUP NO. P2:

FOR USE ON DOOR #(S):

QTY	DESCRIPTION	CATALOG NUMBER	FINISH	MFR
2	EA WIRELESS DOOR CONTACT AND RECEIVER	INOVONICS EN1210W PROVIDED BY SECURITY SYSTEM INSTALLER. INOVONICS EN4204R RECEIVERS, QUANTITY AS REQUIRED FOR FUNCTIONAL SYSTEM CSI STANDARDIZED PRODUCT	WHITE	INN

HARDWARE GROUP NO. P3:

FOR USE ON DOOR #(S):

QTY	DESCRIPTION	CATALOG NUMBER	FINISH	MFR
5	EA ELECTRIFIED LATCH RETRACTION DEVICE WITH BUILT IN REQUEST TO EXIT AND FIELD INSTALLED LATCH BOLT MONITOR KIT	COMMAND ACCESS TECH. MLRK1-VD + VDLMBKIT-ED CSI STANDARDIZED PRODUCT		CAT
5	EA ENERGY TRANSFER HINGE, PIVOT TYPE HINGE	COMMAND ACCESS ETH8WH CSI STANDARDIZED PRODUCT	DARK BRONZE	CAT
1	EA MULTI-TECH READER	SCHLAGE MT11 12 VDC CSI STANDARDIZED PRODUCT	BLACK	SCE
5	EA WIRED DOOR CONTACT	ARITECH 1076CV-N PROVIDED BY SECURITY SYSTEM INSTALLER CSI STANDARDIZED PRODUCT	WHITE	ARI

HARDWARE GROUP NO. P6:

FOR USE ON DOOR #(S):

QTY	DESCRIPTION	CATALOG NUMBER	FINISH	MFR
3	EA ELECTRIFIED LATCH RETRACTION DEVICE WITH BUILT IN REQUEST TO EXIT AND FIELD INSTALLED LATCH BOLT MONITOR KIT	COMMAND ACCESS TECH. MLRK1-VD + VDLMBKIT-ED CSI STANDARDIZED PRODUCT		CAT
3	EA ENERGY TRANSFER HINGE, PIVOT TYPE HINGE	COMMAND ACCESS ETH8WH CSI STANDARDIZED PRODUCT	DARK BRONZE	SCE
1	EA MULTI-TECH READER	SCHLAGE MT11 12 VDC CSI STANDARDIZED PRODUCT	BLK	SCE
3	EA WIRED DOOR CONTACT	ARITECH 1076CV-N PROVIDED BY SECURITY SYSTEM INSTALLER CSI STANDARDIZED PRODUCT	WHITE	ARI

HARDWARE GROUP NO. P7:

FOR USE ON DOOR #(S):

QTY	DESCRIPTION	CATALOG NUMBER	FINISH	MFR
2	EA ELECTRIFIED LATCH RETRACTION DEVICE WITH BUILT IN REQUEST TO EXIT AND FIELD INSTALLED LATCH BOLT MONITOR KIT	MLRK1-VD + VDLMBKIT-ED CSI STANDARDIZED PRODUCT		CAT
2	EA POWER TRANSFER LOOP, BLACK END CAPS	SDC SECURITY PT-2 CSI STANDARDIZED PRODUCT	STAIN LESS STEEL	SDC
1	EA MULTI-TECH READER	SCHLAGE MT11 12 VDC CSI STANDARDIZED PRODUCT	BLK	SCE
2	EA WIRED DOOR CONTACT	ARITECH 1076CV-N PROVIDED BY SECURITY SYSTEM INSTALLER CSI STANDARDIZED PRODUCT	WHITE	ARI

HARDWARE GROUP NO. P4:

FOR USE ON DOOR #(S):

QTY	DESCRIPTION	CATALOG NUMBER	FINISH	MFR
10	EA ELECTRIFIED LATCH RETRACTION DEVICE WITH BUILT IN REQUEST TO EXIT AND FIELD INSTALLED LATCH BOLT MONITOR KIT	COMMAND ACCESS TECH. MLRK1-VD + VDLMBKIT-ED CSI STANDARDIZED PRODUCT		CAT
10	EA ENERGY TRANSFER HINGE, 5 KNUCKLE HINGE	COMMAND ACCESS TECH. ETH2WH CSI STANDARDIZED PRODUCT	MATCH EXIST	SCE
1	EA MULTI-TECH READER	SCHLAGE MT11 12 VDC CSI STANDARDIZED PRODUCT	BLACK	SCE
10	EA WIRED DOOR CONTACT	ARITECH 1076CV-N PROVIDED BY SECURITY SYSTEM INSTALLER CSI STANDARDIZED PRODUCT	WHITE	ARI

HARDWARE GROUP NO. P5:

FOR USE ON DOOR #(S):

QTY	DESCRIPTION	CATALOG NUMBER	FINISH	MFR
2	EA ELECTRIFIED LATCH RETRACTION DEVICE WITH BUILT IN REQUEST TO EXIT AND FIELD INSTALLED LATCH BOLT MONITOR KIT	COMMAND ACCESS TECH. MLRK1-VD + VDLMBKIT-ED CSI STANDARDIZED PRODUCT		CAT
2	EA ENERGY TRANSFER HINGE, PIVOT TYPE HINGE	COMMAND ACCESS ETH8WH CSI STANDARDIZED PRODUCT	DARK BRONZE	SCE
1	EA MULTI-TECH READER	SCHLAGE MT11 12 VDC CSI STANDARDIZED PRODUCT	BLK	SCE
2	EA WIRED DOOR CONTACT	ARITECH 1076CV-N PROVIDED BY SECURITY SYSTEM INSTALLER CSI STANDARDIZED PRODUCT	WHITE	ARI

HARDWARE GROUP NO. H1:

FOR USE ON DOOR #(S):

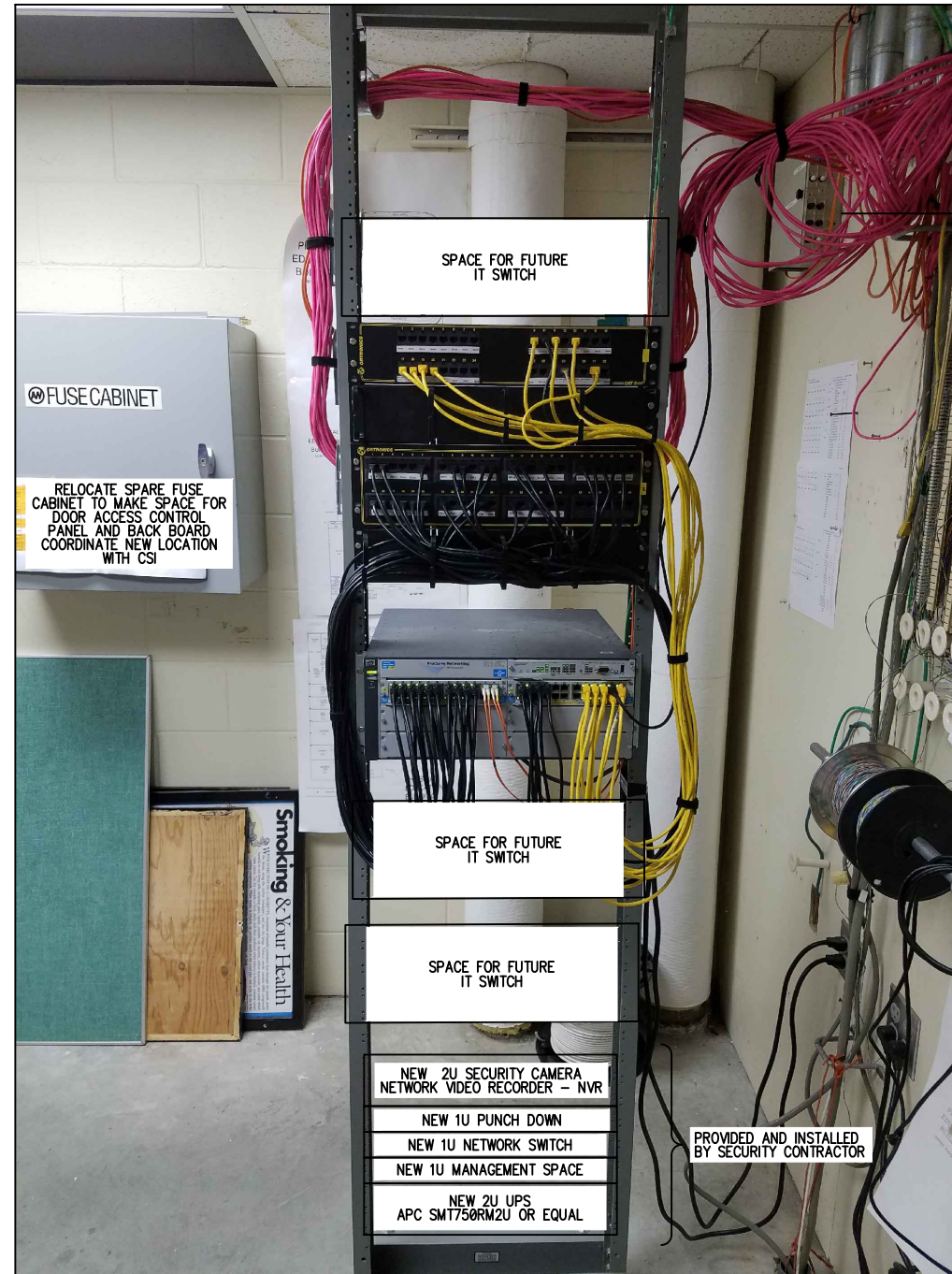
QTY	DESCRIPTION	CATALOG NUMBER	FINISH	MFR
2	EA ELECTRIFIED LATCH RETRACTION DEVICE WITH BUILT IN REQUEST TO EXIT AND FIELD INSTALLED LATCH BOLT MONITOR KIT	COMMAND ACCESS PD10-M-PTS-VD PD10REXKIT-ED - RX KIT PD10LMBKIT-ED - LX KIT CSI STANDARDIZED PRODUCT		CAT
2	EA POWER TRANSFER LOOP, BLACK END CAPS	SDC SECURITY PT-2 CSI STANDARDIZED PRODUCT	STAIN LESS STEEL	SDC
1	EA MULTI-TECH READER	SCHLAGE MT11 12 VDC CSI STANDARDIZED PRODUCT	BLK	SCE
2	EA WIRED DOOR CONTACT	ARITECH 1078/107 SERIES PROVIDED BY SECURITY SYSTEM INSTALLER FIELD VERIFY SIZE AND SERIES CSI STANDARDIZED PRODUCT	WHITE	ARI

DOOR HARDWARE NOTES

- INSTALLATION CONTRACTOR IS REQUIRED TO SCHEDULE A PROJECT DOOR HARDWARE WALK WITH DOOR HARDWARE DISTRIBUTOR, INSTALLING CONTRACTORS SUPERINTENDENT, CSI PROJECT MANAGER, AND DESIGN PROFESSIONAL PRIOR TO ORDERING DOOR HARDWARE AND INSTALLATION. THE PURPOSE OF THIS DOOR HARDWARE WALK IS TO VERIFY THAT THE DOOR HARDWARE FITMENT IS CORRECT PRIOR TO ORDERING.

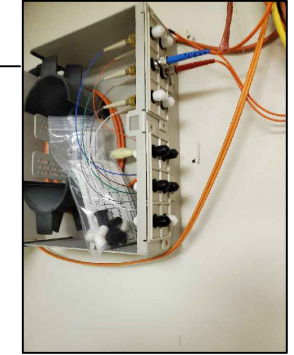
GENERAL NOTES:

- ALL WALL PENETRATIONS FOR CABLES, CONDUITS AND WIREWAYS INSTALLED AS PART OF THIS PROJECT SHALL BE SEALED WITH FIRE RATED CAULK. 3M RED FIRE BARRIER CP 25WB PLUS SEALANT OR EQUAL.



ELECTRICAL ROOM 230 DATA RACK
(ALTERNATE #3)

FIBER PATCH PANEL. OPEN FIBER OPTIC CONNECTION AT POSITIONS 1, 2, 5 AND 6 COORDINATE INSTALLATION WITH CSI IT DEPARTMENT. CONTRACTOR SHALL PROVIDE FIBER PATCH CABLE, AND SFP FOR ACCESS CONTROL NETWORK SWITCH. FIELD VERIFY FIBER OPTIC CABLE TYPE AND SFP REQUIREMENTS PRIOR TO ORDERING AND INSTALLATION.



NO.	REVISIONS	DATE
1	ADDENDUM #2	2/6/20

MUSGROVE ENGINEERING, P.A.
234 S. Whisperwood Way
Twin Falls, ID 83403
208.344.0885
645 West 25th Street
Twin Falls, ID 83402
208.343.2862
www.musgrovepa.com

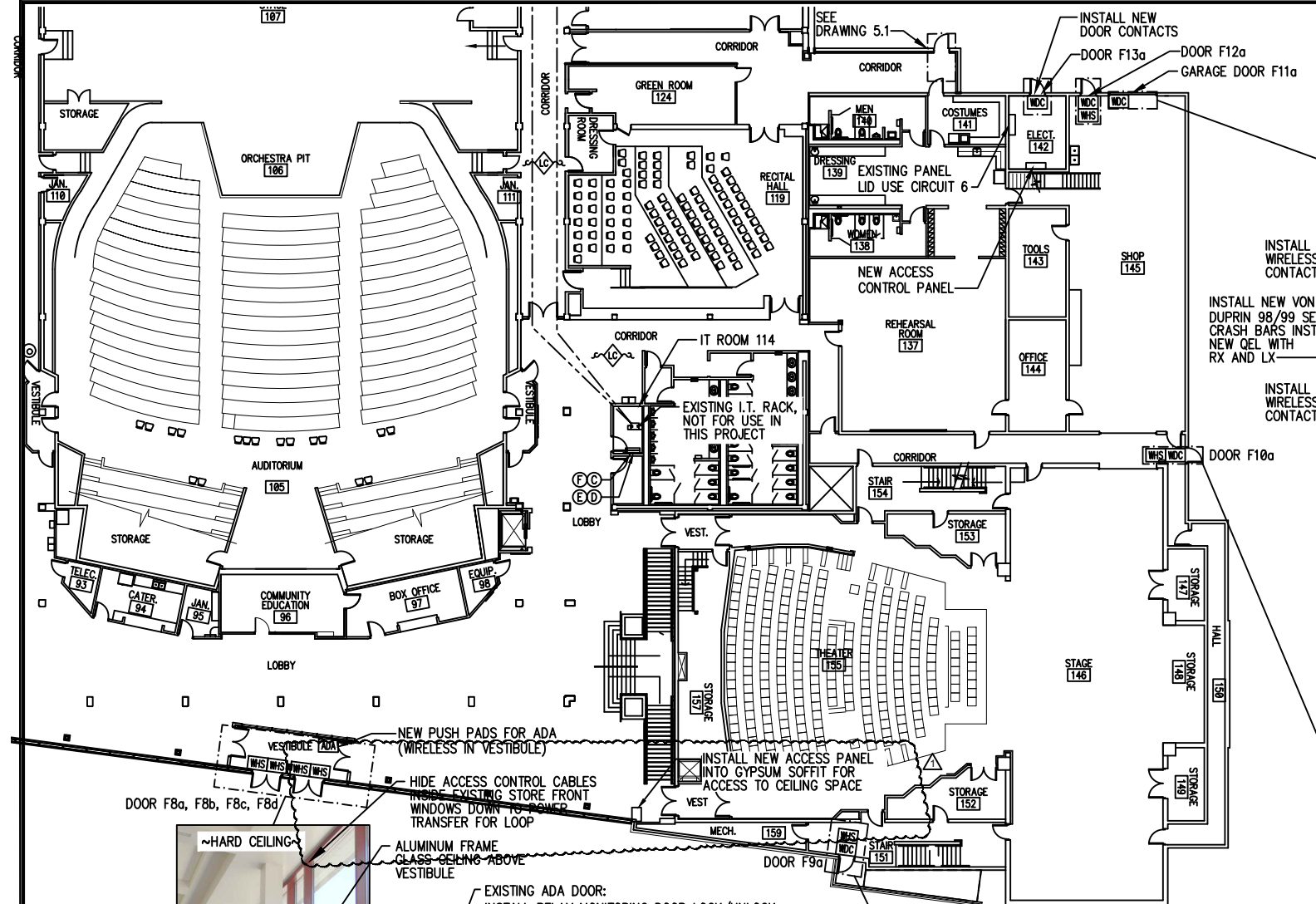
MTI

OVER 40 YEARS OF EXCELLENCE

DPW PROJECT 19107
CSI: ENTRY ACCESS CONTROLS, PHASE II
COLLEGE OF SOUTHERN IDAHO
TWIN FALLS, ID

PROJECT	B18-112
DRAWN	DBH
CHECKED	MNB
DATE	JULY 2024
SCALE	AS SHOWN
SHEET	

E11.5



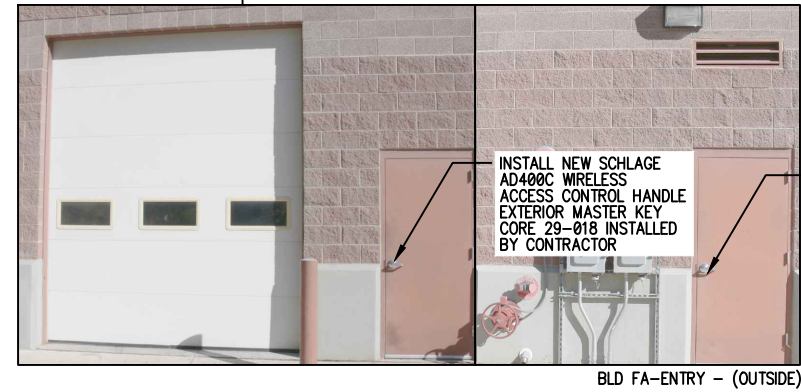
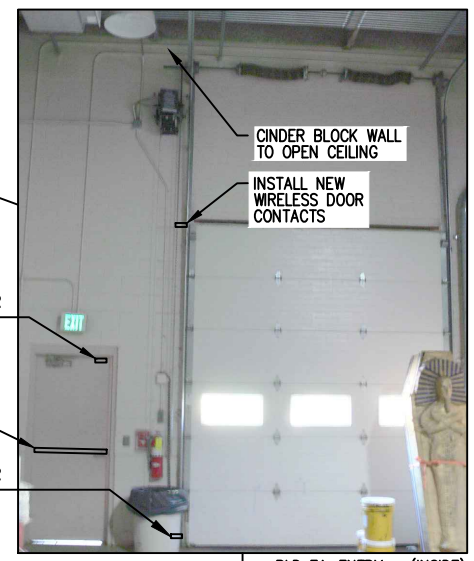
CEILING TYPE LEGEND

◇ LC	LAY-IN CEILING
◇ HC	HARD CEILING
◇ SC	STRUCTURAL CEILING

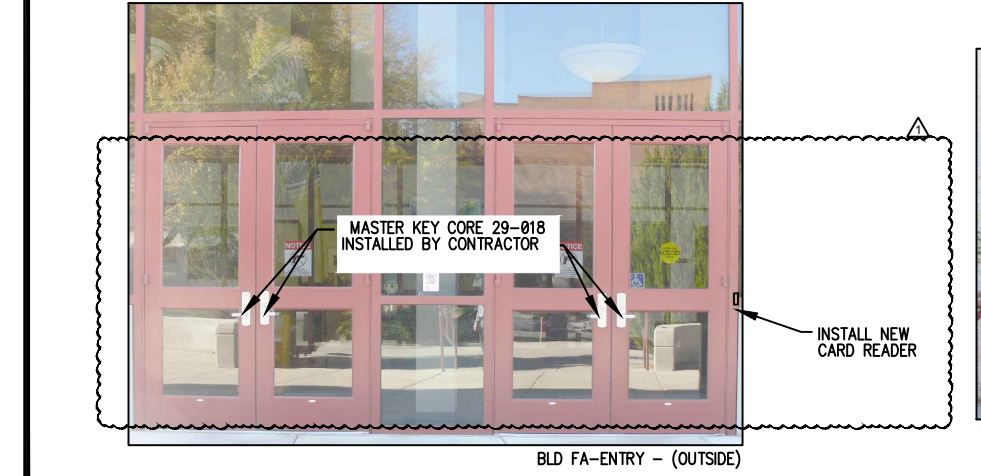
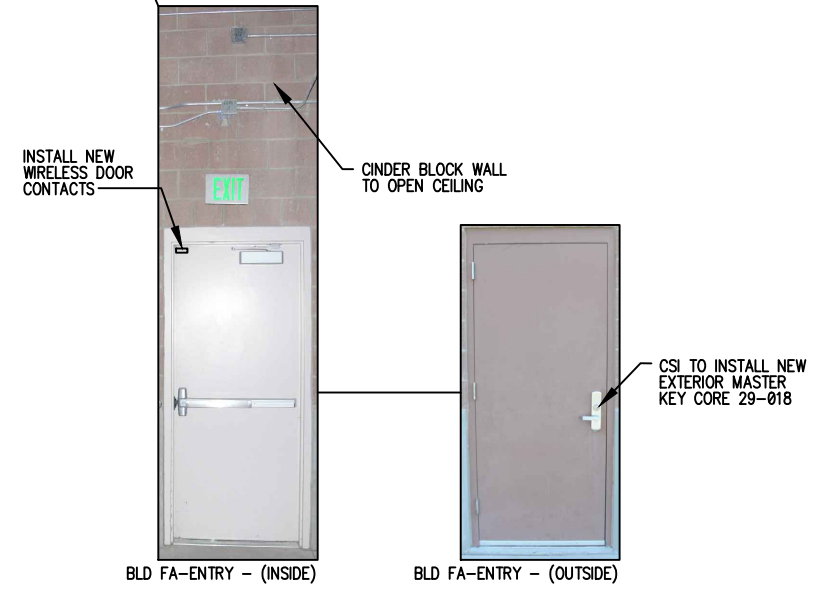
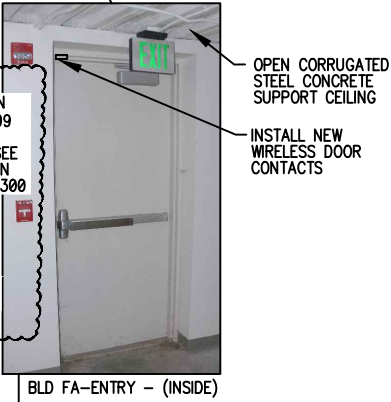
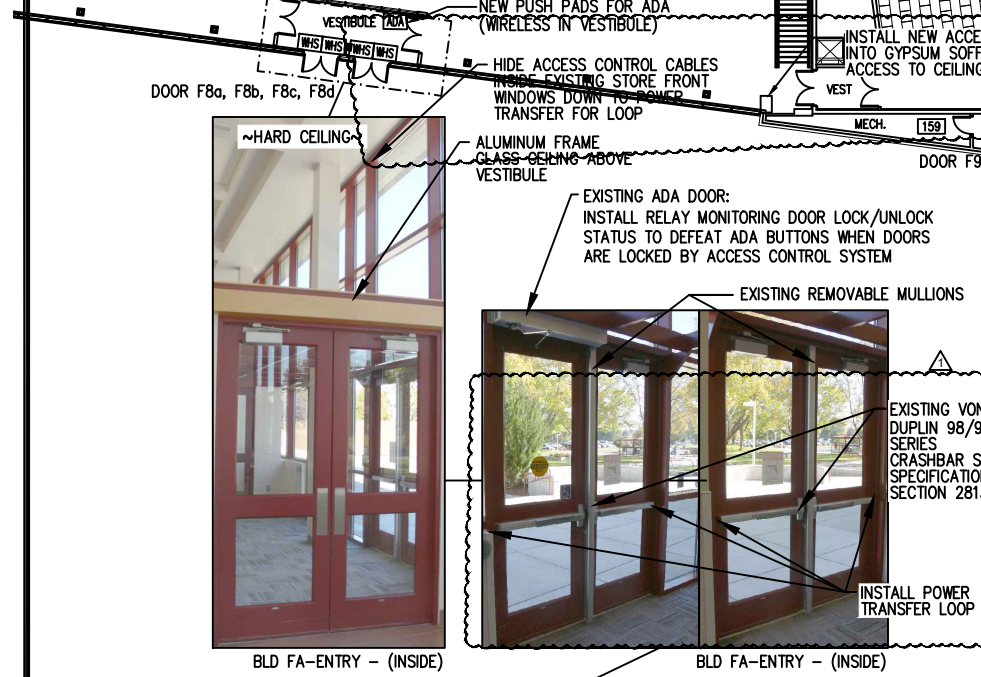
ACCESS CONTROL CABLE LEGEND

---	WINDY CITY WIRE 4461060 (GREEN)
---	WINDY CITY WIRE 002393-50 (PURPLE) OR EQUAL FOR EACH CONTROLLED DOOR

- NEW ACCESS CONTROL KEY NOTES:**
- Ⓐ ACCESS CONTROL CABLING SHALL BE ROUTED THROUGH DOOR FRAMES AND CONCEALED USING ALL MEANS POSSIBLE, WHERE NOT POSSIBLE BUT AS A LAST RESORT INSTALL COLOR MATCHING ALUMINUM RACEWAY.
 - Ⓑ ACCESS CONTROL AND SECURITY CAMERA CABLING TO BE ROUTED INSIDE CONDUIT. SIZE CONDUITS CONSISTENT WITH BICSI STANDARDS.
 - Ⓒ INSTALL MERCURY SECURITY EP1502 WITH MERCURY SECURITY MR161N INTERFACE DOOR CONTROL CARDS IN GANG ENCLOSURE(S) NEAR THIS LOCATION. INSTALL NEW DUPLEX RECEPTACLE INSIDE GANG ENCLOSURE AND CONNECT TO NEAREST 120V CIRCUIT IN ROOM. COORDINATE INSTALLATION WITH ENGINEER.
 - Ⓓ INSTALL 4FTx8FT PLYWOOD PAINTED BLACK WITH 3 COATS OF FIRE RETARDANT PAINT TO MOUNT DOOR CONTROL CABINET AND NETWORK RACK ON.
 - Ⓔ CONNECT TO EXISTING 62.5MM FIBER CABINET. CONTRACTOR TO PROVIDE AND INSTALL ALL REQUIRED SMALL FORM FACTOR PLUGGABLE TRANSCEIVERS (SFP), CABLES, FIBER, SWITCHES, AND FIELD VERIFICATION LABOR REQUIRED TO MAKE COMPLETE AND FUNCTIONAL CONNECTIONS.
 - Ⓕ INSTALL WALL MOUNTED NETWORK RACK LEGRAND VMMSD-4RU-42B. INSTALL NEW DUPLEX RECEPTACLE INSIDE GANG ENCLOSURE AND CONNECT TO NEAREST 120V CIRCUIT IN ROOM. COORDINATE INSTALLATION WITH ENGINEER.



- GENERAL NOTES:**
- 1. ALL WALL PENETRATIONS FOR CABLES, CONDUITS AND WIREWAYS INSTALLED AS PART OF THIS PROJECT SHALL BE SEALED WITH FIRE RATED CAULK. 3M RED FIRE BARRIER CP 25WB PLUS SEALANT OR EQUAL.



DATE	2/20/20	REVISIONS							
NO.	1	ADDENDUM #2							

MUSGROVE ENGINEERING P.A.
234 S. Williamson Way
Boise, ID 83709
208.384.0585
645 West 25th Street
Twin Falls, ID 83402
www.musgrovepa.com

OVER 40 YEARS OF EXCELLENCE

DPW PROJECT 19107
CSI: ENTRY ACCESS CONTROLS, PHASE II
COLLEGE OF SOUTHERN IDAHO
TWIN FALLS, ID

PROJECT	B18-112
DRAWN	DBH
CHECKED	MNB
DATE	JULY 2024
SCALE	AS SHOWN
SHEET	

E5.2

HARDWARE GROUP NO. F1:
FOR USE ON DOOR #(S):

F2a	F3B	F11a	F13a		
QTY	DESCRIPTION	CATALOG NUMBER	FINISH	MFR	
1	EA WIRELESS DOOR CONTACT AND RECEIVER	INOVOINICS EN1210W PROVIDED BY SECURITY SYSTEM INSTALLER. INOVOINICS EN4204R RECEIVERS, QUANTITY AS REQUIRED FOR FUNCTIONAL SYSTEM	WHITE	INN	
		CSI STANDARDIZED PRODUCT			

HARDWARE GROUP NO. F2:
FOR USE ON DOOR #(S):

F1a, b	F6a, b				
QTY	DESCRIPTION	CATALOG NUMBER	FINISH	MFR	
4	EA ELECTRIFIED LATCH RETRACTION DEVICE WITH BUILT IN REQUEST TO EXIT AND FIELD INSTALLED LATCH BOLT MONITOR KIT	COMMAND ACCESS TECH. MLRK1-VD + VDLMBKIT-ED		CAT	
4	EA POWER TRANSFER LOOP, BLACK END CAPS	SDC SECURITY PT-2	STAIN LESS STEEL	SDC	
1	EA MULTI-TECH READER	SCHLAGE MT11 12 VDC	BLACK	SCE	
4	EA WIRED DOOR CONTACT	ARITECH 1076CW-N PROVIDED BY SECURITY SYSTEM INSTALLER	WHITE	ARI	
		CSI STANDARDIZED PRODUCT			

HARDWARE GROUP NO. F3:
FOR USE ON DOOR #(S):

F3a	F5a	F7a	F9a	F10a	F12a
QTY	DESCRIPTION	CATALOG NUMBER	FINISH	MFR	
1	EA WIRELESS ELECTRONIC HANDLE SET, CYLINDER LOCK, CLASSROOM, MULTI-TECH, RHODES LEVER, SATIN CHROME FINISH.	AD-400-CY-50-MT-RHO.626 (LEVER PREP AND CONFIGURATION AS REQ) BATTERY POWERED	626	SCE	
1	EA PIM	PIM400-1501		SCE	
1	EA WIRELESS DOOR CONTACT AND RECEIVER	INOVOINICS EN1210W PROVIDED BY SECURITY SYSTEM INSTALLER. INOVOINICS EN4204R RECEIVERS, QUANTITY AS REQUIRED FOR FUNCTIONAL SYSTEM	WHITE	INN	
		CSI STANDARDIZED PRODUCT			

HARDWARE GROUP NO. F4:
FOR USE ON DOOR #(S):

F1a, b	F6a, b				
QTY	DESCRIPTION	CATALOG NUMBER	FINISH	MFR	
2	EA ELECTRIFIED LATCH RETRACTION DEVICE WITH BUILT IN REQUEST TO EXIT AND FIELD INSTALLED LATCH BOLT MONITOR KIT	COMMAND ACCESS TECH. MLRK1-VD + VDLMBKIT-ED		CAT	
2	EA POWER TRANSFER LOOP, BLACK END CAPS	SDC SECURITY PT-2	STAIN LESS STEEL	SDC	
1	EA MULTI-TECH READER	SCHLAGE MT11 12 VDC	BLACK	SCE	
2	EA WIRED DOOR CONTACT	ARITECH 1076CW-N PROVIDED BY SECURITY SYSTEM INSTALLER	WHITE	ARI	
		CSI STANDARDIZED PRODUCT			

HARDWARE GROUP NO. F5:
FOR USE ON DOOR #(S):

F4a	F11a				
QTY	DESCRIPTION	CATALOG NUMBER	FINISH	MFR	
1	EA WIRED DOOR CONTACT DOOR TRACK MOUNTED	WBOX TECHNOLOGIES OE-DC4811	AL	WBX	
		CSI STANDARDIZED PRODUCT			

DOOR HARDWARE NOTES

- INSTALLATION CONTRACTOR IS REQUIRED TO SCHEDULE A PROJECT DOOR HARDWARE WALK WITH DOOR HARDWARE DISTRIBUTOR, INSTALLING CONTRACTORS SUPERINTENDENT, CSI PROJECT MANAGER, AND DESIGN PROFESSIONAL PRIOR TO ORDERING DOOR HARDWARE AND INSTALLATION. THE PURPOSE OF THIS DOOR HARDWARE WALK IS TO VERIFY THAT THE DOOR HARDWARE FITMENT IS CORRECT PRIOR TO ORDERING.

GENERAL NOTES:

- ALL WALL PENETRATIONS FOR CABLES, CONDUITS AND WIREWAYS INSTALLED AS PART OF THIS PROJECT SHALL BE SEALED WITH FIRE RATED CAULK. 3M RED FIRE BARRIER CP 25WB PLUS SEALANT OR EQUAL.

DRAWING KEY NOTES:

- ① U SPACE CHANGED BY CSI IT.



ROOM 114 DATA RACK
(ALTERNATE #4)

NO.	REVISIONS	DATE
1 <td>ADDENDUM #2 <td>24/08/20</td> </td>	ADDENDUM #2 <td>24/08/20</td>	24/08/20

MUSGROVE ENGINEERING, P.A.
2340 W. Valley Road, ID 83705
208.384.4055
445 West 25th Street
Twin Falls, ID 83402
www.musgrovepa.com

OVER 40 YEARS OF EXCELLENCE

DPW PROJECT 19107
CSI: ENTRY ACCESS CONTROLS, PHASE II
COLLEGE OF SOUTHERN IDAHO
TWIN FALLS, ID

PROJECT	B18-112
DRAWN	DBH
CHECKED	MNB
DATE	JULY 2024
SCALE	AS SHOWN
SHEET	

E5.4