

Addendum No. 1

1/20/25

College of Southern Idaho Leroy Craig Center

This addendum addresses the following:

- Revised Packages
- Bidder Questions
- Revised Bid Date
- See Starr Corporation web site for Appendix A Geotechnical Evaluation Report

Bid date is hereby changed to 2:00PM, Thursday, February 27, 2025.

Attachments

- Revise Bid Packages
- LKV Addendum No. 1

End of Add. No. 1





ADDENDUM NO. 1
January 16, 2025

**PROJECT: LeRoy Craig Jerome Center
College of Southern Idaho
Jerome, Idaho**

The following Addendum applies to the Drawings and/or Specifications for this project and shall be part of the Contract Documents.

SPECIFICATIONS

VOLUME 3

1. Add Appendix A Geotechnical Evaluation Report, Appendix B Stormwater Pollution Prevention Plan, and Appendix C Hydrology Report. (attached herein to Addendum No. 1)

SPECIFICATION 083323 OVERHEAD COILING DOORS

1. Paragraph 2.3, A & B: Delete requirements for Slide-locking Bolts and Safety Interlock Switches.

SPECIFICATION 096723 RESINOUS FLOORING

1. Paragraph 2.1, A: Delete Sherwin Williams Resuflor Aqua Topcoat AC as Basis of Design Product. Basis of Design Product shall be Dura-A-Flex, Inc, Poly-Crete SLB seamless flooring system. See revised Specification 096723 Resinous Flooring. (attached herein to Addendum No. 1)
2. Paragraph 2.1, B: Delete Sherwin Williams Epoxy Cove base system. Basis of Design Product shall be Dura-A-Flex, Inc, Poly-Crete TF Plus Cove Hardener. See revised Specification 096723 Resinous Flooring. (attached herein to Addendum No. 1)
3. Revised Specification 096723 shall have 6 pages in lieu of 4 pages as indicated in the Table of Contents.

SPECIFICATION 104416 FIRE EXTINGUISHERS

1. Paragraph 3.3, C: Mount Knox Box on brick wall to the left of door 100A at 72" A.F.F. Coordinate final location with local Fire Jurisdiction.

DRAWINGS

SHEET A3.1b FLOOR PLAN

1. Add eight (8) 6" steel bollards at coiling overhead doors 142aB and 149B at exterior and interior jamb location both sides of opening. See Sketch SK-1.

SHEET A4.1 ROOM FINISH SCHEDULE

1. Rooms 131 Training Lab and 136 Science Lab shall receive rubber base (RB) in lieu of CB as indicated.

SHEET A4.2 DOOR FINISH SCHEDULE

1. Door 128B: Frame Type shall be Type A3 in lieu of S3 as indicated, and the Hardware Set shall be A3 in lieu of 02 as indicated.

SHEET A6.2 ROOF DETAILS

1. Detail 2 Roof Type R-2: Tapered roofing system shall be tapered polyisocyanurate insulation board in lieu of EPS board and shall maintain an R value of R-30 throughout the full extent the assembly as indicated on Roof Plan Sheet A6.1 See Specification 075423, 2.4. B, for polyisocyanurate insulation board requirements.

MECHANICAL

1. See Mechanical Addendum #1 from Musgrove Engineering dated 1/15/25 with attached revised Sheet P1.0 Plumbing Foundation Plan. (attached herein to Addendum No. 1)

APPROVALS

The following approvals are for manufacturers of products only unless specified products or systems are indicated. Contractor is responsible for providing product and/or materials that are equivalent in size, performance, quality, and appearance to those specified. Contractor is responsible for all conditions and/or field adaptations required for approved products other than those specified.

This acceptance is an acceptance of quality only. No attempt has been made to check each material as to special features, capacities or physical dimensions especially required by this project. Final acceptance of exact features, sizes, capacities, etc. all of which must match materials indicated specified, will be determined when submitted during construction period. Certain acceptances are subject to conditions as noted.

SPECIFICATION SECTION NO.	ITEM	MANUFACTURER / PRODUCT
033000 Cast-In-Place Concrete	Vapor Retarder	ISI Building Products / Viper II
075423 TPO Roofing	Membrane	Versico / VersiWeld
083323 Overhead Coiling Doors	Overhead Coiling Door	Overhead Door / Model 625

- Attachments: - Appendix A Geotechnical Evaluation Report, Appendix B Stormwater Pollution Prevention Plan, and Appendix C Hydrology Report.
- Specification Section 096723 Resinous Flooring (revised)
 - Sketch SK-1
 - Mechanical Engineering Addendum #1 – 1/15/25 with Sheet P1.0 attachment

- End of Addendum No. 1

Leroy Craig CSI Center-Jerome, ID				
Bids to Starr Corporation by February 27, 2025 at 2:00PM				
Bid Package No.	Package Description	Spec Section	Description	Additional Comments: All items include material, labor, and equipment for installation, unless noted otherwise.
BP-01 CONCRETE				
01	Concrete	Division 1	General Requirements	All sections to be included in their entirety.
01	Concrete	033000	Cast-in-Place Concrete	Includes all building and site concrete including reinforcement and embeds. All site concrete including curbs, gutters & sidewalk included. Foundation excavation, slab base & site-concrete prep by Site Contractor, (BP-24). Install anchor bolts, bollards, and any other imbedded items; items provided by others.
01	Concrete	071113	BituminousDampproofing	Foundation dampproofing.
01	Concrete	072100	Thermal Insulation	Foundation & under-slab rigid insulation, only.
01	Concrete	079200	Joint Sealants	Sealants for interior concrete scope of work, only.
01	Concrete	321313	Concrete Paving	Include in its entirety.
01	Concrete	321373	Concrete Paving Joint Sealants	Sealants for exterior concrete scope of work, only.
01	Concrete	321726	Tactile Warning Surfacing	Include in its entirety.
BP-02 MASONRY				
02	Masonry	Division 1	General Requirements	All sections to be included in their entirety.
02	Masonry	042113	Brick Masonry	Include in its entirety.
02	Masonry	079200	Joint Sealants	Sealants for this scope of work only.
BP-03 POLISHED CONCRETE				
03	Polished Concrete	Division 1	General Requirements	All sections to be included in their entirety.
03	Polished Concrete	033543	Structural Steel Framing	Include in its entirety.
03	Polished Concrete	079200	Joint Sealants	Concrete joints lying within or bordering polished concrete area
BP-04 STRUCTURAL STEEL-PROVIDE AND INSTALL				
04	Structural Steel	Division 1	General Requirements	All sections to be included in their entirety. Provide anchor bolts for this scope. Anchor bolts installed by others. Provide bollards to be installed
04	Structural Steel	051200	Structural Steel Framing	Include in its entirety.
04	Structural Steel	052100	Steel Joist Framing	Include in its entirety.
04	Structural Steel	053100	Steel Decking	Include in its entirety.
04	Structural Steel	055000	Metal Fabrications	Include in its entirety.
04	Structural Steel	055213	Pipe and Tube Railings	Include in its entirety.
BP-05 ROUGH CARPENTRY				
05	Rough Carpentry	Division 1	General Requirements	All sections to be included in their entirety.
05	Rough Carpentry	061000	Rough Carpentry	Includes Fascia backing, parapet nailers, roof unit platform, and other rough carpentry items.
05	Rough Carpentry	101450	Digitally Printed Vinyl Wallcovering Murals	Include in its entirety.
05	Rough Carpentry	122413	Roller Window Shades	Include in its entirety.
05	Rough Carpentry	323300	Site Furnishings	Include in its entirety.
BP-06 MILLWORK				
06	Millwork	Division 1	General Requirements	All sections to be included in their entirety.
06	Millwork	064116	Plastic Laminate Faced Architectural Cabinets	Include in its entirety.
06	Millwork	066510	Solid Surface Fabrications	Include in its entirety.
06	Millwork	123553	Laboratory Casework	Include in its entirety.
06	Millwork	079200	Joint Sealants	Install sealant where work of this scope meets work of other scopes.
BP-07 INSULATION				
07	Insulation	Division 1	General Requirements	All sections to be included in their entirety.
07	Insulation	072100	Thermal Insulation	Excludes insulation on roof and foundation
BP-08 ROOFING				
08	Roofing	Division 1	General Requirements	All sections to be included in their entirety.
08	Roofing	074113	Metal Roof Panels	Include in its entirety. Warranty is specifically included, see specifications
08	Roofing	074293	Soffit Panels	Include in its entirety.
08	Roofing	075423	Thermoplastic Polyolefin (TPO) Roofing	Include in its entirety. Warranty is specifically included, see specifications
08	Roofing	076200	Sheet Metal Flashing and Trim	Flashing and trim for this scope of work
08	Roofing	077200	Roof Accessories	
08	Roofing	079200	Joint Sealants	Sealants for this scope of work only.
BP-09 INSULATED METAL PANELS				
09	IMP	Division 1	General Requirements	All sections to be included in their entirety.
09	IMP	074213	Insulated Metal Wall Panels	Include in its entirety.
09	IMP	076200	Sheet Metal Flashing and Trim	Flashing and trim for this scope of work
09	IMP	079200	Joint Sealants	Sealants for this scope of work only.
BP-10 DOORS, FRAMES, AND HARDWARE				
10	Doors, Frames, and Hardware	Division 1	General Requirements	All sections to be included in their entirety.
10	Doors, Frames, and Hardware	081113	Hollow Metal Doors and Frames	Include in its entirety.
10	Doors, Frames, and Hardware	081416	Flush Wood Doors	Include in its entirety.
10	Doors, Frames, and Hardware	083113	Access Doors	Include in its entirety.
10	Doors, Frames, and Hardware	087100	Door Hardware	Hardware for this scope of work, only.
BP-11 ALUMINUM FRAMED ENTRANCES & STOREFRONTS				
11	Aluminum Storefronts	Division 1	General Requirements	All sections to be included in their entirety.
11	Aluminum Storefronts	083513	Multi-panel Folding Aluminum-Framed Glass Door	Include in its entirety.
11	Aluminum Storefronts	084113	Aluminum-Framed Entrances and Storefronts	Include in its entirety.
11	Aluminum Storefronts	084513	Translucent Glazed Aluminum Curtain Wall	Include in its entirety.
11	Aluminum Storefronts	085619	Pass-Thru Windows	Include in its entirety.
11	Aluminum Storefronts	087100	Door Hardware	Hardware for this scope of work, only.
11	Aluminum Storefronts	088000	Glazing	Includes all glass for storefronts & hollow metal doors & frames.
11	Aluminum Storefronts	079200	Joint Sealants	Install sealant where work of this scope meets work of other scopes.
11	Aluminum Storefronts	076200	Sheet Metal Flashing and Trim	Flashing and trim for this scope of work
BP-12 OVERHEAD DOORS				
12	Overhead Doors	Division 1	General Requirements	All sections to be included in their entirety.
12	Overhead Doors	083323	Overhead Colling Doors	Include in its entirety.
BP-13 GYPSUM BOARD SYSTEMS				
13	Gypsum Board Systems	Division 1	General Requirements	All sections to be included in their entirety.
13	Gypsum Board Systems	054000	Cold-Formed Metal Framing	Include in its entirety.
13	Gypsum Board Systems	066400	Plastic Paneling	Include in its entirety.
13	Gypsum Board Systems	072165	Thermal, Water, and Air Barrier Systems	Include in its entirety.
13	Gypsum Board Systems	072700	Infiltration Barier	Include in its entirety.
13	Gypsum Board Systems	092216	Light Gauge Steel Framing	Include in its entirety.
13	Gypsum Board Systems	092900	Gypsum Board	Include in its entirety.
13	Gypsum Board Systems	095113	Acoustical Panel Ceilings	Include in its entirety.
13	Gypsum Board Systems	097723	Acoustical Panels	Include in its entirety.
13	Gypsum Board Systems	098413	Fixed Sound Absorptive Panels	Include in its entirety.
BP-14 STUCCO				
14	Stucco	Division 1	General Requirements	All sections to be included in their entirety.
14	Stucco	092403	Portland Cement Plaster	Include in its entirety.
14	Stucco	079200	Joint Sealants	Sealants for this scope of work only.
BP-15 TILE				
15	Tile	Division 1	General Requirements	All sections to be included in their entirety.
15	Tile	093013	Tiling	Include in its entirety.
15	Tile	079200	Joint Sealants	Sealants for this scope of work only.
BP-16 FLOORING				
16	Flooring	Division 1	General Requirements	All sections to be included in their entirety.
16	Flooring	096513	Resilient Base and Accessories	Include in its entirety.
16	Flooring	096516	Resilient Sheet Flooring	Include in its entirety. Minor floor prep is included
16	Flooring	096519	Resilient Tile Flooring	Include in its entirety. Minor floor prep is included
16	Flooring	096816	Carpeting	Include in its entirety. Minor floor prep is included
16	Flooring	023948	Joint Sealants	Sealants for this scope of work only.

BP-17 RESINOUS FLOORING				
17	Resinous Flooring	Division 1	General Requirements	All sections to be included in their entirety.
17	Resinous Flooring	096723	Resinous Flooring	Include in its entirety.
17	Resinous Flooring	079200	Joint Sealants	Sealants for this scope of work only.
BP-18 PAINTING				
18	Painting	Division 1	General Requirements	All sections to be included in their entirety.
18	Painting	071900	Water Repellents	Include in its entirety.
18	Painting	099113	Exterior Painting	Include in its entirety.
18	Painting	099123	Interior Painting	Include in its entirety.
18	Painting	099600	High Performance Coatings	Include in its entirety.
18	Painting	023948	Joint Sealants	Interior caulking on painted surfaces. Caulking at millwork and storefront is by others.
BP-19 SPECIALTIES				
19	Specialties	Division 1	General Requirements	All sections to be included in their entirety.
19	Specialties	088300	Mirrors	Include in its entirety.
19	Specialties	101100	Visual Display Surfaces	Include in its entirety.
19	Specialties	101419	Signage	Include in its entirety.
19	Specialties	102113	Toilet Partitions	Include in its entirety.
19	Specialties	102226	Operable Partitions	Include in its entirety.
19	Specialties	102600	Wall and Door Protection	Include in its entirety.
19	Specialties	102800	Toilet and Bath Accessories	Include in its entirety.
19	Specialties	104413	Fire Extinguisher Cabinets	Include in its entirety.
19	Specialties	104416	Fire Extinguishers	Include in its entirety.
19	Specialties	105113	Metal Lockers	Include in its entirety.
19	Specialties	023948	Joint Sealants	Sealants for this scope of work only.
BP-20 FOOD SERVICE EQUIPMENT				
20	Food Service Equipment	Division 1	General Requirements	All sections to be included in their entirety.
20	Food Service Equipment	114000	Food Service Equipment	Include in its entirety. Scope includes removal of all protective film.
20	Food Service Equipment	079200	Joint Sealants	Sealants for this scope of work only.
BP-21 FIRE SUPPRESSION				
21	Fire Sprinkler Systems	Division 1	General Requirements	All sections to be included in their entirety.
21	Fire Sprinkler Systems	210000	Fire Sprinkler Systems	System to connect to pipe and flange installed by other 1' AFF in Fire Riser Room. Site contractor to install fire supply line. Fire Suppression contractor to be on site to witness testing as required by AHJ.
BP-22 PLUMBING				
22	Plumbing	Division 1	General Requirements	All sections to be included in their entirety.
22	Plumbing	220000	Plumbing General Requirements	Include in its entirety.
22	Plumbing	220100	Plumbing	Include in its entirety. Tie to site piping 5' out of building.
BP-23 HVAC				
23	HVAC	Division 1	General Requirements	All sections to be included in their entirety.
23	HVAC	230000	HVAC General Requirements	Include in its entirety.
23	HVAC	230100	Heating, Ventilating, and Air Conditioning	Include in its entirety.
23	HVAC	230800	HVAC Commissioning Requirements	Include in its entirety.
23	HVAC	230900	Direct Digital Control System for HVAC	Provided and installed by others. Participate, and provide assistance as necessary, with DDC contractor for start up and commissioning.
23	HVAC	115313	Laboratory Fume Hoods	Include in its entirety.
BP-24 ELECTRICAL				
24	Electrical	Division 1	General Requirements	All sections to be included in their entirety.
24	Electrical	260500	Electrical General Provisions	Include in its entirety.
24	Electrical	260502	Short-Circuit/Coordination Study/Arc Flash Hazard Analysis	Include in its entirety.
24	Electrical	260519	Conductors and Cables	Include in its entirety.
24	Electrical	260526	Grounding	Include in its entirety.
24	Electrical	260533	Raceways and Boxes	Include in its entirety.
24	Electrical	260543	Under Slab and Underground Electrical Work	Include in its entirety.
24	Electrical	260553	Identification for Electrical Systems	Include in its entirety.
24	Electrical	260800	Lighting Systems Commissioning	Include in its entirety.
24	Electrical	262200	Dry-Type Transformers	Include in its entirety.
24	Electrical	262400	Distribution Switchboards	Include in its entirety.
24	Electrical	262416	Panelboards	Include in its entirety.
24	Electrical	262726	Wiring Devices	Include in its entirety.
24	Electrical	262813	Fuses	Include in its entirety.
24	Electrical	262815	Disconnect Switches	Include in its entirety.
24	Electrical	265100	Interior Lighting	Include in its entirety.
24	Electrical	265200	Emergency Lighting	Include in its entirety.
24	Electrical	265600	Exterior Lighting	Include in its entirety.
24	Electrical	270553	Conduits and Backboxes for Communication Systems	Include in its entirety.
24	Electrical	271101	Telecom Raceway Systems	Include in its entirety.
24	Electrical	271343	Communication Services Cabling	Include in its entirety.
24	Electrical	281300	Access Control Software and Database Management	Include in its entirety.
24	Electrical	282100	Surveillance Cameras	Include in its entirety.
24	Electrical	282300	Existing Video Management System	Include in its entirety.
24	Electrical	283100	Fire Alarm	Include in its entirety.
24	Electrical	230900	Direct Digital Control System for HVAC	Include in its entirety.
BP-25 SITEWORK				
25	Sitework	Division 1	General Requirements	All sections to be included in their entirety.
25	Sitework	310000	General Site Construction Requirements	Include in its entirety.
25	Sitework	310120	Traffic Control	Include in its entirety.
25	Sitework	311000	Site Cleaning	Include in its entirety.
25	Sitework	312000	Earth Moving	Foundation excavation & backfill included. Provide and install gravel for slabs. Include base & prep for all site concrete.
25	Sitework	315000	Excavation Support and Protection	Include in its entirety.
25	Sitework	321216	Asphalt Paving	Include in its entirety.
25	Sitework	321723	Pavement Markings	Include in its entirety.
25	Sitework	328500	Landscape Grading	Rough grading to with in +/- 0.1' included in this scope. All amendments and final grading by Landscaping Contractor.
25	Sitework	323150	Site Signage	Include in its entirety.
25	Sitework	330130	Adjustment of Structures	Include in its entirety.
25	Sitework	330528	Trenching and Backfilling for Utilities	Include in its entirety.
25	Sitework	331100	Site Water Lines	Include in its entirety.
25	Sitework	333100	Site Sanitary Sewerage System	Include Sand & Grease traps as shown on Site Utility drawings.
25	Sitework	334100	Storm Utility Drainage Piping	Include all components on Sheet SD5.5.
25	Sitework	334600	Subdrainage	Include in its entirety.
25	Sitework	Appendix A	Geotechnical Evaluation Report	Include in its entirety.
25	Sitework	Appendix B	Stormwater Pollution Prevention Plan	Implement and maintain as shown on SWPPP
25	Sitework	Appendix C	Hydrology Report	For Information
BP-26 LANDSCAPING				
26	Landscaping	Division 1	General Requirements	All sections to be included in their entirety.
26	Landscaping	328400	Landscape Irrigation	Include in its entirety.
26	Landscaping	328450	Irrigation Central Control	Include in its entirety.
26	Landscaping	328500	Landscape Grading	Rough grading to with in +/- 0.1' by site contractor. All amendments and final grading included in this scope.
26	Landscaping	329113	Soil Preparations	Include in its entirety.
26	Landscaping	329200	Turf and Grasses	Include in its entirety.
26	Landscaping	329300	Plants	Include in its entirety.
BP-27 CHAIN-LINK & DECORATIVE FENCES				
27	Fencing	Division 1	General Requirements	All sections to be included in their entirety.
27	Fencing	323113	Chain Link Fences and Gates	Include in its entirety.
27	Fencing	323119	Architectural Metal Privacy Fences	Include in its entirety.

SECTION 096723 - RESINOUS FLOORING

PART 1 – GENERAL

1.1 RELATED DOCUMENTS

- A. Drawings and general provisions of the Contract, including General and Supplementary Conditions and Division 1 Specification Sections, apply to this Section.

1.2 SUMMARY

- A. This section includes the following:
 - 1. Resinous flooring system as shown on the drawings and in schedules.

1.3 SYSTEM DESCRIPTION

- A. The work shall consist of preparation of the substrate, the furnishing and application of a cementitious urethane based self-leveling seamless flooring system with Flintshot quartz aggregate broadcast with epoxy grout coat and urethane topcoat.
- B. The system shall have the color and texture as specified by the Owner with a nominal thickness of 3/16 inch. It shall be applied to the prepared area(s) as defined in the plans strictly in accordance with the Manufacturer's recommendations.
- C. Cove base to be applied where noted on plans and per manufacturers standard details unless otherwise noted

1.4 SUBMITTALS

- A. Product Data: Latest edition of Manufacturer's literature including performance data and installation procedures.
- B. Manufacturer's Safety Data Sheet (SDS) for each product being used.
- C. Samples: A 3 x 3 inch square sample of the proposed system. Color, texture, and thickness shall be representative of overall appearance of finished system subject to normal tolerances.

1.5 QUALITY ASSURANCE

- A. The Manufacturer shall have a minimum of 10 years experience in the production, sales, and technical support of epoxy and urethane industrial flooring and related materials.
- B. The Applicator shall have experience in installation of the flooring system as confirmed by the manufacturer in all phases of surface preparation and application of the product specified.
- C. No requests for substitutions shall be considered that would change the generic type of the specified System.
- D. System shall be in compliance with requirements of United States Department of Agriculture (USDA), Food, Drug Administration (FDA), and local Health Department.
- E. System shall be in compliance with the Indoor Air Quality requirements of California section 01350 as verified by a qualified independent testing laboratory.
- F. A pre-installation conference shall be held between Applicator, General Contractor and the Owner for review and clarification of this specification, application procedure, quality control, inspection and acceptance criteria and production schedule.

1.6 PRODUCT DELIVERY, STORAGE, AND HANDLING

A. Packing and Shipping

1. All components of the system shall be delivered to the site in the Manufacturer's packaging, clearly identified with the product type and batch number.

B. Storage and Protection

1. The Applicator shall be provided with a dry storage area for all components. The area shall be between 60 F and 85 F, dry, out of direct sunlight and in accordance with the Manufacturer's recommendations and relevant health and safety regulations.
2. Copies of Safety Data Sheets (SDS) for all components shall be kept on site for review by the Engineer or other personnel.

C. Waste Disposal

1. The Applicator shall be provided with adequate disposal facilities for non-hazardous waste generated during installation of the system.

1.7 PROJECT CONDITIONS

A. Site Requirements

1. Application may proceed while air, material and substrate temperatures are between 60 F and 85 F providing the substrate temperature is above the dew point. Outside of this range, the Manufacturer shall be consulted.
2. The relative humidity in the specific location of the application shall be less than 85 % and the surface temperature shall be at least 5 F above the dew point.
3. The Applicator shall be supplied with adequate lighting equal to the final lighting level during the preparation and installation of the system.

B. Conditions of new concrete to be coated with cementitious urethane material.

1. Concrete shall be moisture cured for a minimum of 7 days and have fully cured a minimum of 14 days in accordance with ACI-308 prior to the application of the coating system pending moisture tests.
2. Concrete shall have a flat rubbed finish, float or light steel trowel finish (a hard steel trowel finish is neither necessary nor desirable).
3. Sealers and curing agents should not to be used.
4. Concrete surfaces on grade shall have been constructed with a vapor barrier to protect against the effects of vapor transmission and possible delamination of the system.

C. Safety Requirements

1. Non-related personnel in the work area shall be kept to a minimum.

1.8 WARRANTY

- A. Dur-A-Flex, Inc. warrants that material shipped to buyers at the time of shipment substantially free from material defects and will perform substantially to Dur-A-Flex, Inc. published

literature if used in accordance with the latest prescribed procedures and prior to the expiration date.

- B. Dur-A-Flex, Inc. liability with respect to this warranty is strictly limited to the value of the material purchase.

PART 2 – PRODUCTS

2.1 FLOORING

- A. Dur-A-Flex, Inc, Poly-Crete SLB (self leveling broadcast quartz), seamless flooring system.
 - 1. System Materials:
 - a. Topping: Dur-A-Flex, Inc, Poly-Crete SL resin, hardener and SL aggregate.
 - b. The aggregate shall be Dur-A-Flex, Inc. Flintshot quartz aggregate.
 - d. Grout coat: Dur-A-Flex, Inc. Dur-A-Glaze Shop Floor resin and hardener.
 - e. Topcoat: Dur-A-Flex, Inc. Armor Top resin and hardener and colorant
 - 2. Patch Materials
 - a. Shallow Fill and Patching: Use Dur-A-Flex, Inc. Poly-Crete MD (up to ¼ inch).
 - b. Deep Fill and Sloping Material (over ¼ inch): Use Dur-A-Flex, Inc. Dur-A-Tex UM.

2.2 MANUFACTURER

- A. Dur-A-Flex, Inc., 95 Goodwin Street, East Hartford, CT 06108, Phone: (860) 528-9838, Fax: (860) 528-2802
- B. Manufacturer of Approved System shall be single source and made in the USA.

2.3 PRODUCT REQUIREMENTS

A. Topping	Poly-Crete SL
1. Percent Reactive	100 %
2. VOC	0 g/L
3. Bond Strength to Concrete ASTM D 4541	>400 psi, substrates fails
4. Compressive Strength, ASTM C 579	9,000 psi
5. Tensile Strength, ASTM D 638	2,175 psi
6. Flexural Strength, ASTM D 790	5,076 psi
7. Impact Resistance @ 125 mils, MIL D-3134, No visible damage or deterioration	Pass
B. Grout Coat	Dur-A-Glaze Shop Floor
1. VOC	8 g/L
2. Compressive Strength, ASTM D 695	17,500 psi
3. Tensile Strength, ASTM D 638	4,000 psi
4. Flexural Strength, ASTM D 790	6,250 psi
5. Flexural Modulus of Elasticity, ASTM D 790	6.2 x 10 ⁵
6. Abrasion Resistance, ASTM D 4060 CS17 Wheel, 1,000 gm load, 1,000 cycles	24 mg loss
7. Flame Spread/NFPA-101, ASTM E 84	Class A
8. Flammability, ASTM D 635	Self Extinguishing
9. Indentation, MIL D-3134	0.025 Max
10. Impact Resistance MIL D-3134	Pass

11. Water Absorption. MIL D-24613		0.04%
C. Topcoat		Armor Top
1. Percent Solids		95 %
2. VOC		0 g/L
3. Tensile Strength, ASTM D 2370		7,000 psi
4. Adhesion, ASTM 4541		Substrate Failure
5. Hardness, ASTM D 3363		>4H
6. 60 ⁰ Gloss ASTM D 523		Satin: 50 +/-10 Gloss: 75 +/-10
7. Abrasion Resistance, ASTM D4060	Gloss	Satin
CS 17 wheel (1,000 g load) 1,000 cycles	4	8 mg loss with grit
	10	12 mg loss without grit
8. Pot Life, 70 F, 50% RH		45 Minutes
9. Full Chemical Resistance		7 days

PART 3 – EXECUTION

3.1 EXAMINATION

- A. Examine substrates, areas and conditions, with Applicator present, for compliance with requirements for maximum moisture content, installation tolerances and other conditions affecting flooring performance.
 - 1. Verify that substrates and conditions are satisfactory for flooring installation and comply with requirements specified.

3.2 PREPARATION

A. General

- 1. New and existing concrete surfaces shall be free of oil, grease, curing compounds, loose particles, moss, algae growth, laitance, friable matter, dirt, and bituminous products.
- 2. Moisture Testing: Perform tests recommended by manufacturer and as follows.
 - a. Perform relative humidity test using in situ probes, ASTM F 2170. Proceed with installation only after substrates have a maximum 99% relative humidity level measurement.
 - b. If the relative humidity exceeds 99% then the Owner and/or Engineer shall be notified and advised of additional cost for the possible installation of a vapor mitigation system that has been approved by the manufacturer or other means to lower the value to the acceptable limit.
- 3. Mechanical surface preparation
 - a. Shot blast all surfaces to receive flooring system with a mobile steel shot, dust recycling machine (Blastrac or equal). All surface and embedded accumulations of paint, toppings hardened concrete layers, laitance, power trowel finishes and other similar surface characteristics shall be completely removed leaving a bare concrete surface having a minimum profile of CSP 4-5 as described by the International Concrete Repair Institute.
 - b. Floor areas inaccessible to the mobile blast machines shall be mechanically abraded to the same degree of cleanliness, soundness and profile using diamond grinders, needle guns, bush hammers, or other suitable equipment.

- c. Where the perimeter of the substrate to be coated is not adjacent to a wall or curb, a minimum 3/16 inch deep and 1/4 inch wide key cut shall be made to properly seat the system, providing a smooth transition between areas. The detail cut shall also apply to drain perimeters and expansion joint edges.
- d. Cracks and joints (non-moving) greater than 1/8 inch wide are to be chiseled or chipped-out and repaired per manufacturer's recommendations.
4. At spalled or worn areas, mechanically remove loose or delaminated concrete to a sound concrete and patch per manufactures recommendations.

3.3 APPLICATION

A. General

1. The system shall be applied in four distinct steps as listed below:
 - a. Substrate preparation
 - b. Topping/overlay application with quartz aggregate broadcast.
 - c. Grout coat application.
 - d. Topcoat application
2. Immediately prior to the application of any component of the system, the surface shall be dry and any remaining dust or loose particles shall be removed using a vacuum or clean, dry, oil-free compressed air.
3. The handling, mixing and addition of components shall be performed in a safe manner to achieve the desired results in accordance with the Manufacturer's recommendations.
4. The system shall follow the contour of the substrate unless pitching or other leveling work has been specified by the Architect.
5. A neat finish with well-defined boundaries and straight edges shall be provided by the Applicator.

B. Topping

1. The topping shall be applied as a self-leveling system as specified by the Architect. The topping shall be applied in one lift with a nominal thickness of 1/8 inch.
2. The topping shall be comprised of three components, a resin, hardener and filler as supplied by the Manufacturer.
3. The hardener shall be added to the resin and thoroughly dispersed by suitably approved mechanical means. SL Aggregate shall then be added to the catalyzed mixture and mixed in a manner to achieve a homogenous blend.
4. The topping shall be applied over horizontal surfaces using 1/2 inch "v" notched squeegee, trowels or other systems approved by the Manufacturer.
5. Immediately upon placing, the topping shall be degassed with a loop roller.
6. Quartz aggregate shall be broadcast to excess into the wet material at the rate of 1 lbs/sf.
7. Allow material to fully cure. Vacuum, sweep and/or blow to remove all loose aggregate.

C. Grout Coat

1. The topcoat shall be squeegee applied and back rolled with a coverage rate of 80-90 sf/gal.
2. The topcoat shall be comprised of a liquid resin and a liquid hardener that is mixed in the ratio of 1 part hardener to 2 parts resin and installed per the manufacturer's recommendations.

D. Topcoat

1. The topcoat shall be roller applied with dip and roll method at 3 mils.
2. The topcoat shall be comprised of a liquid resin, hardener and colorant mixed per the manufacturer's instructions.
3. The finish floor will have a nominal thickness of 3/16 inch.

E. Cove Base

1. Manufacturer's standard integral cove base shall be installed at all areas of resinous flooring.

3.4 FIELD QUALITY CONTROL

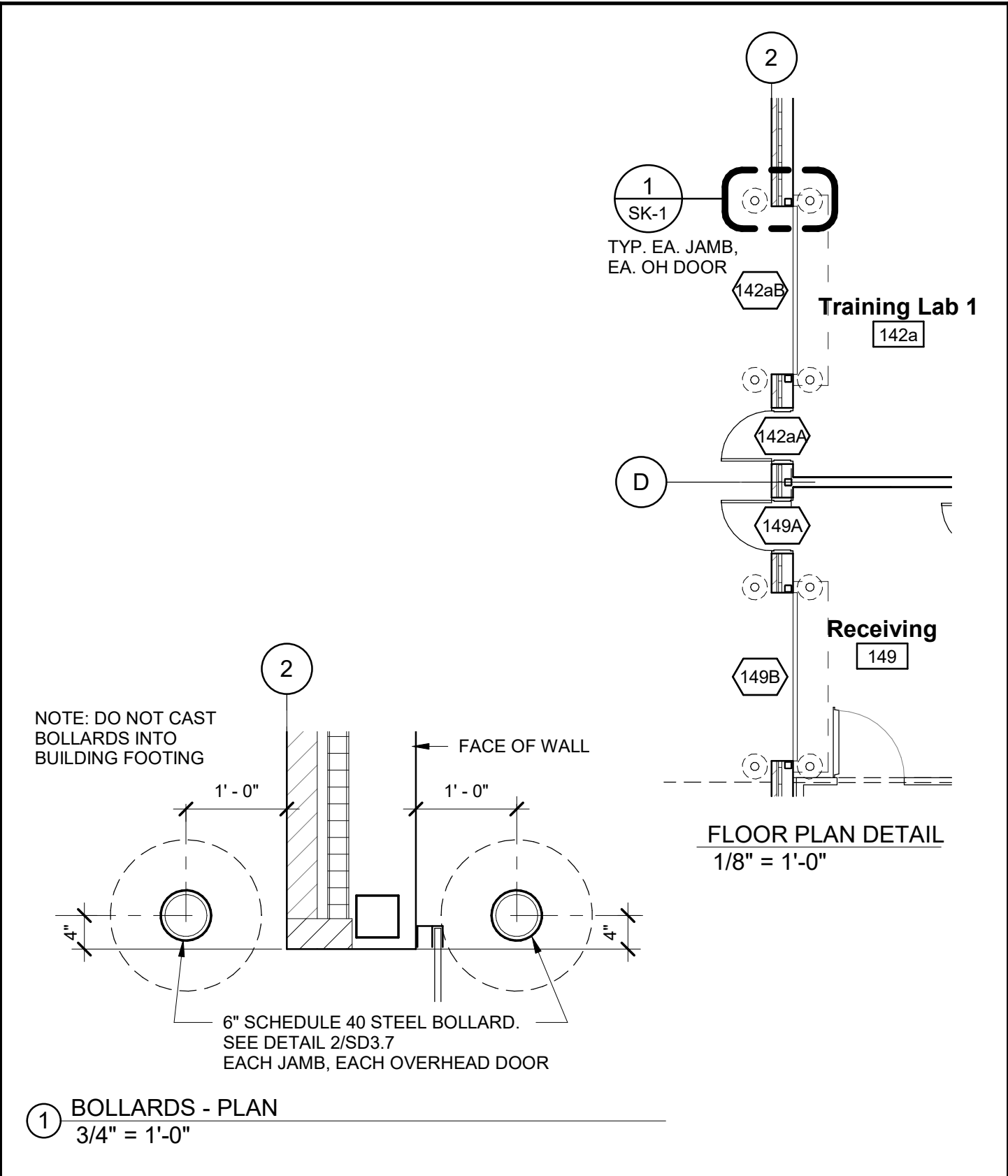
A. Tests, Inspection

1. The following tests shall be conducted by the Applicator:
 - a. Temperature
 1. Air, substrate temperatures and, if applicable, dew point.
 - b. Coverage Rates
 1. Rates for all layers shall be monitored by checking quantity of material used against the area covered.

3.5 CLEANING AND PROTECTION

- A. Cure flooring material in compliance with manufacturer's directions, taking care to prevent their contamination during stages of application and prior to completion of the curing process.
- B. Remove masking. Perform detail cleaning at floor termination, to leave cleanable surface for subsequent work of other sections.

END OF SECTION 096723



LeRoy Craig Jerome Center

College of Southern Idaho

REFERENCE: A3.1

REVISION: Addendum #1 1/16/25

DRAWING NO.

PROJECT NO.: 2219

SK-1

DATE: 1/16/2025



**MUSGROVE
ENGINEERING, P.A.**

234 S. Whisperwood Way
Boise, Idaho 8379
(208) 384.0585

645 West 25th Street
Idaho Falls, Idaho 83402
(208) 523.2862

www.musgrovepa.com

OVER 45 YEARS OF ENGINEERING EXCELLENCE

ADDENDUM #1

(MECHANICAL)

Date: 01/15/25
Job Number: 23-319
Prepared By: Joe Davies
Sheet: 1 of 1

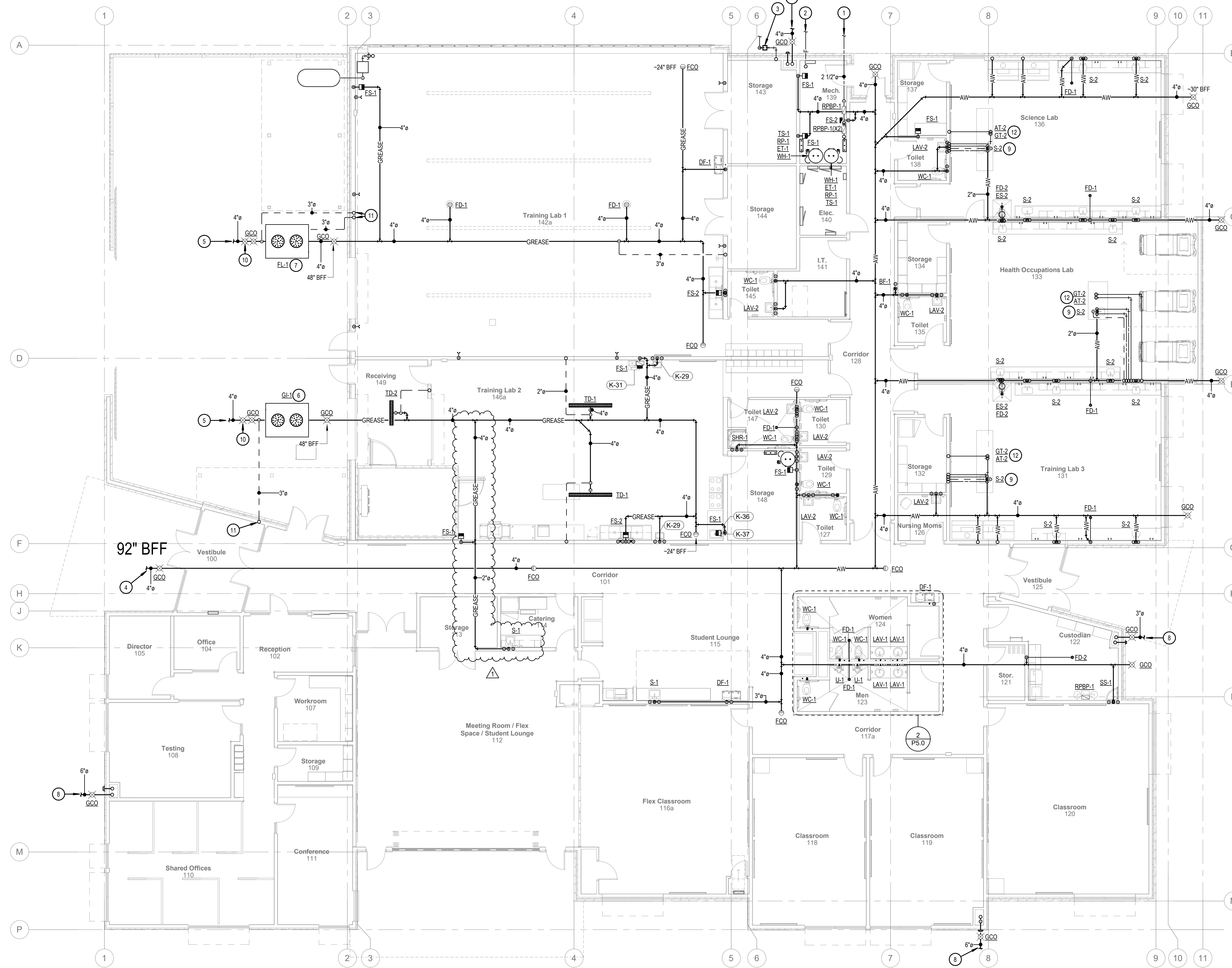
To: LKV Architects
2400 E. Riverside Drive
Boise, ID 83706
Attention: Ron Polintan

Project: CSI – LeRoy Craig Jerome Center

NOTICE TO BIDDERS: THIS ADDENDUM IS HEREBY MADE A PART OF THE PROJECT REQUIREMENTS AND CONTRACT DOCUMENTS FOR THE PROJECT REFERENCED ABOVE.

Plan modifications:

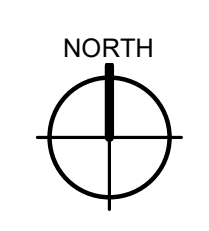
1. Sheet P1.0 – Plumbing Foundation Plan
 - a. Waste connection for sink in catering 114 rerouted and connected to grease interceptor per city comments.



KEYED NOTES:

- 1. NEW DOMESTIC WATER LINE, SIZED AS INDICATED, FROM NEW 2 1/2-INCH WATER METER. REFER TO CIVIL PLANS FOR CONTINUATION.
- 2. FIRE SPRINKLER LINE TO BE SIZED AND INSTALLED BY FIRE SPRINKLER CONTRACTOR. REFER TO SPECIFICATIONS FOR ADDITIONAL FIRE SPRINKLER SYSTEM REQUIREMENTS.
- 3. GAS METER FURNISHED AND INSTALLED BY LOCAL GAS COMPANY. REFER TO GAS SIZING CHART FOR ADDITIONAL INFORMATION. COORDINATE INSTALLATION WITH LOCAL GAS COMPANY.
- 4. NEW WASTE LINE OUT TO MAIN. SEE CIVIL PLANS FOR CONTINUATION. INVERT ELEVATION IS 92" BELOW FINISH FLOOR BASED ON A SLOPE OF 1/4 INCH PER 1 FOOT AND A STAIRING DEPTH OF 30" BELOW FINISH FLOOR.
- 5. WASTE LINE FROM INTERCEPTOR OUT TO MAIN SEE CIVIL PLANS FOR CONTINUATION.
- 6. SEE GREASE INTERCEPTOR DETAIL FOR REQUIREMENTS.
- 7. SEE FLAMMABLE LIQUIDS INTERCEPTOR DETAIL FOR REQUIREMENTS.
- 8. ROUTE ROOF DRAIN TO BELOW GRADE AND OUT OF BUILDING JUST ABOVE FOOTING. SEE CIVIL PLANS FOR CONTINUATION.
- 9. SEE ISLAND SINK VENT DETAIL.
- 10. SAMPLING STATION PORT.
- 11. VENT UP IN WALL. SEE PLUMBING FLOOR PLAN FOR CONTINUATION.
- 12. ROUTE PIPING BELOW SLAB OUT TO ISLAND.

1 PLUMBING FOUNDATION PLAN
1/8" = 1'-0"



LKV ARCHITECTS
2400 E. Riverwalk Drive
Boise, Idaho 83706
www.lkvarchitects.com
208.336.3443

MUSGROVE ENGINEERING, P.A.
Boise, ID 1 208.384.0157
Idaho Falls, ID 1 208.523.2862
www.musgrovepa.com
OVER 40 YEARS OF EXCELLENCE
Project No. 23-319

PROFESSIONAL ENGINEER
13317
1/15/2025
STATE OF IDAHO
JASON A. RICE

Revisions	Date
Description	01/15/2025
1 ADDENDUM 1	

CSI - LeRoy Craig Jerome Center
College of Southern Idaho
Jerome, Idaho

DATE: 10/28/24
LKV PROJECT # 2219

DRAWN BY: JAD
CHECKED BY: JR

BID SET

DRAWING NO.:
P1.0
PLUMBING FOUNDATION
PLAN